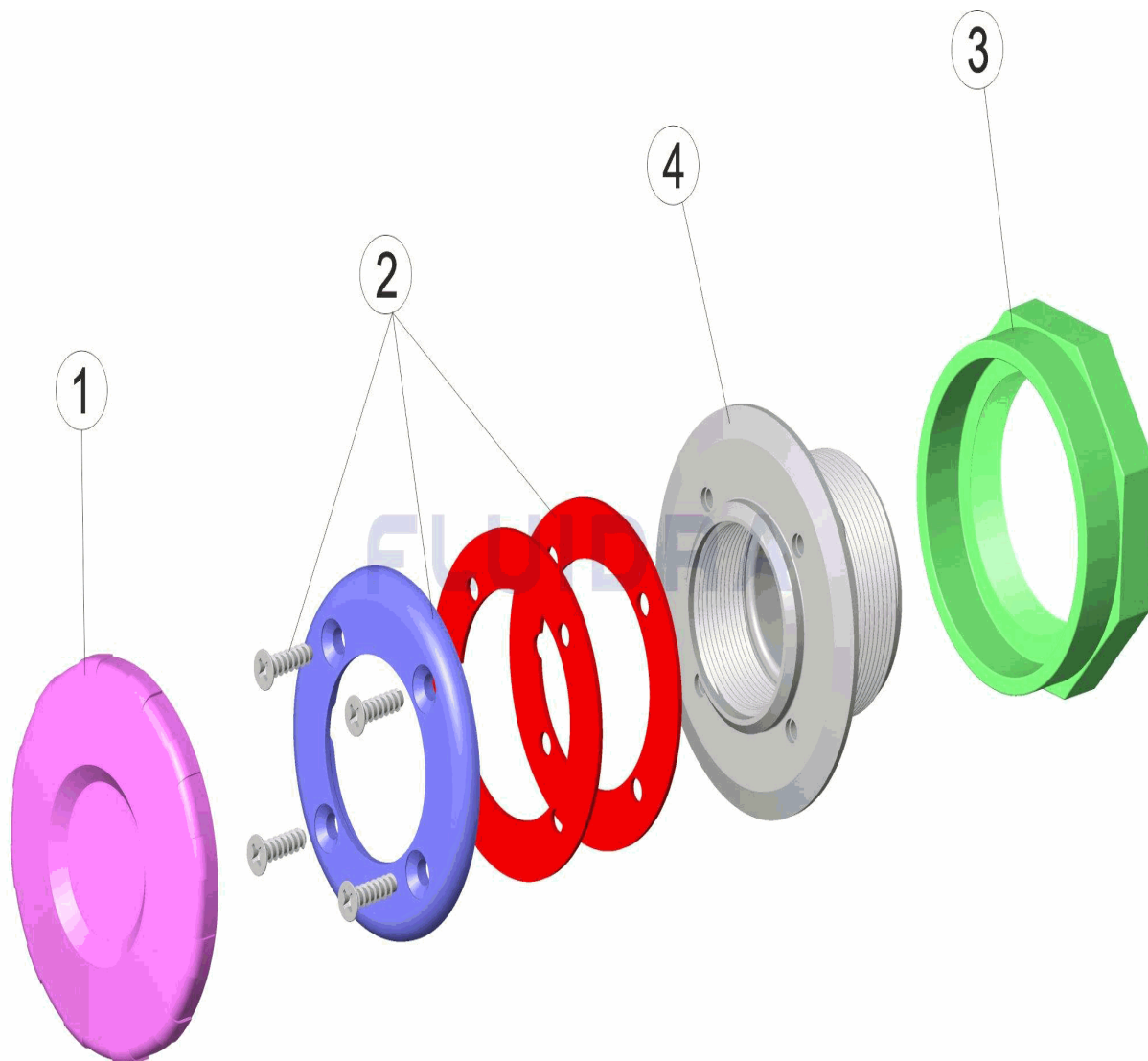


CODIGO **32386, 32387**

DESCRIPCION: **BOQUILLA ASPIRACION PISC. PREF, LINER ENCOLAR Y ROSCAR**



ESPAÑOL

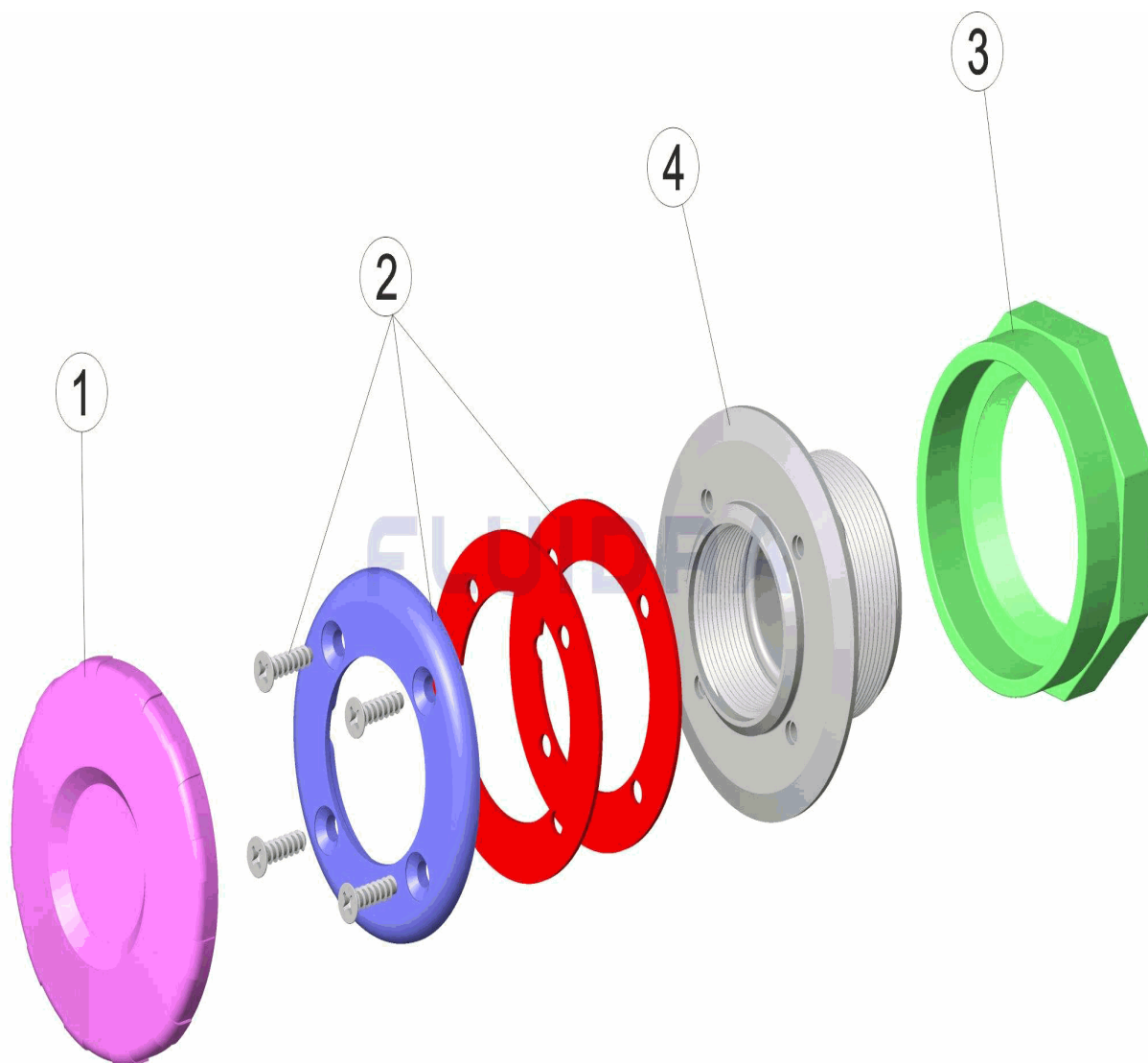
| POS | CODIGO | DESCRIPCION | CANTIDAD | POS | CODIGO | DESCRIPCION | CANTIDAD |
|-----|------------|--------------------------|----------|-----|--------------|---------------------------------------|----------|
| 1 | 4402044901 | TAPON BOQUILLA | | 4 | * 31412R0001 | CUERPO BOQUILLA 100X42,5/LINER/INT.EN | |
| 2 | 4402044802 | ARO Y JUNTA PISC. PREF. | | 4 | * 25496R0001 | CUERPO BOQUILLA LINER PARA ROSCAR | |
| 3 | 4402045403 | TUERCA HEXAGONAL 2" BS " | | | | | |

CODIGO **32386, 32387**DESCRIPCION: **BOQUILLA ASPIRACION PIS. PREF, LINER ENCOLAR Y ROSCAR****OBSERVACIONES**

| POS | CODIGO | OBSERVACIONES |
|-----|--------------|---------------|
| 4 | * 31412R0001 | PARA: 32386 |
| 4 | * 25496R0001 | PARA: 32387 |

CODE **32386, 32387**

DESCRIPTION: **BOUCHE ASPIRATION PISC. PRÉF, LINER ENCOLLER ET VISSER**



FRANCAIS

| POS | CODE | DESCRIPTION | QUANTITE | POS | CODE | DESCRIPTION | QUANTITE |
|-----|------------|-----------------------------|----------|-----|--------------|--------------------------------|----------|
| 1 | 4402044901 | BOUCHON DE BOUCHE | | 4 | * 31412R0001 | CORPS BOUCHE 100X42,5 A COLLER | |
| 2 | 4402044802 | JOINT ET BRIDE POUR LINER | | 4 | * 25496R0001 | CORPS BUSE LINER POUR TARAUD | |
| 3 | 4402045403 | RONDELLE HEXAGONALE 2" BS " | | | | | |

CODE **32386, 32387**

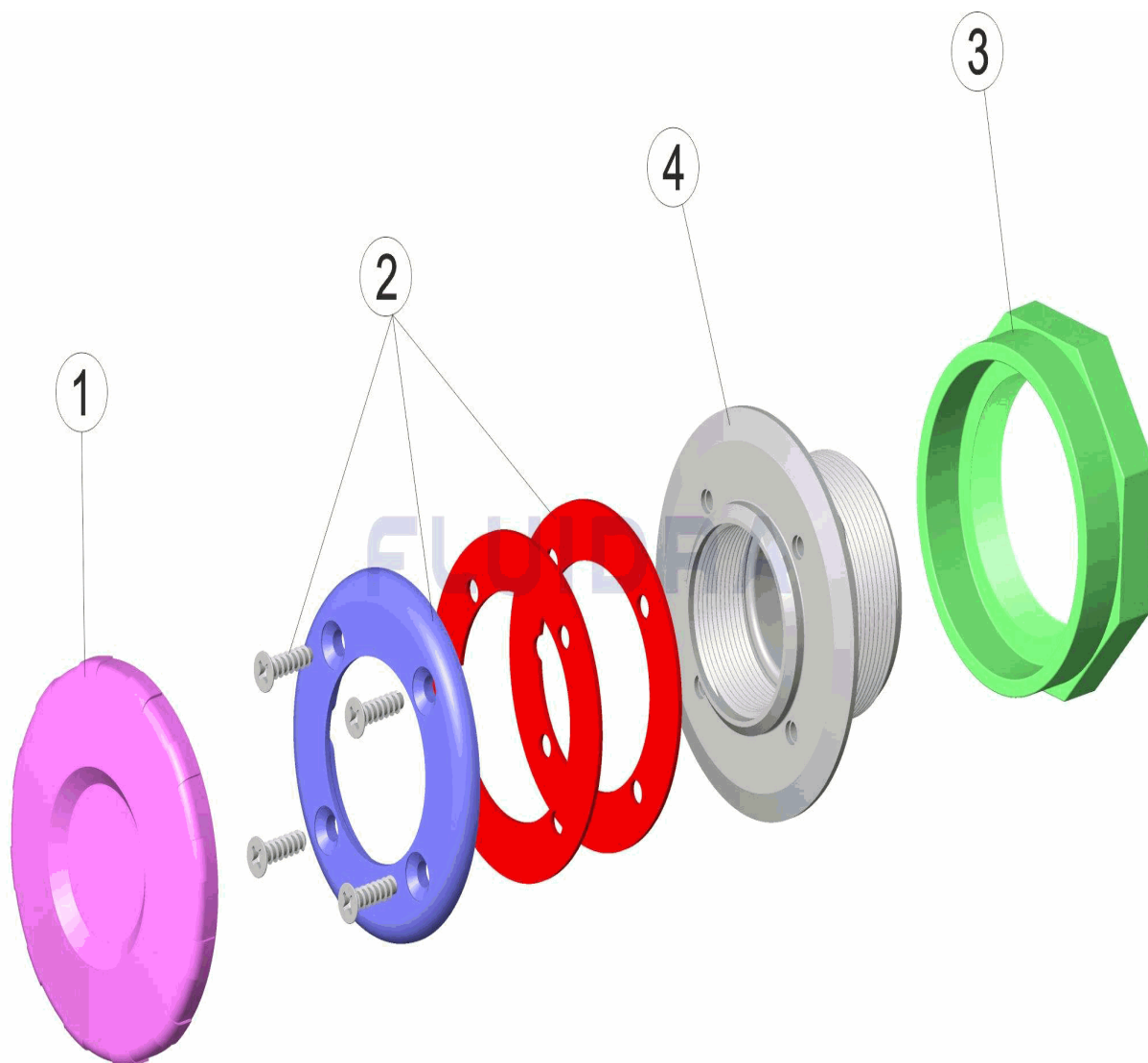
DESCRIPTION: **BOUCHE ASPIRATION PISC. PRÉF, LINER ENCOLLER ET VISSER**

OBSERVATIONS

| POS | CODE | OBSERVATIONS |
|-----|--------------|--------------|
| 4 | * 31412R0001 | POUR: 32386 |
| 4 | * 25496R0001 | POUR: 32387 |

CODE **32386, 32387**

DESCRIPTION: **SUCTION NOZZLE PREFAB POOL, LINER SOLVENT-WELD AND SCREW-IN**



ENGLISH

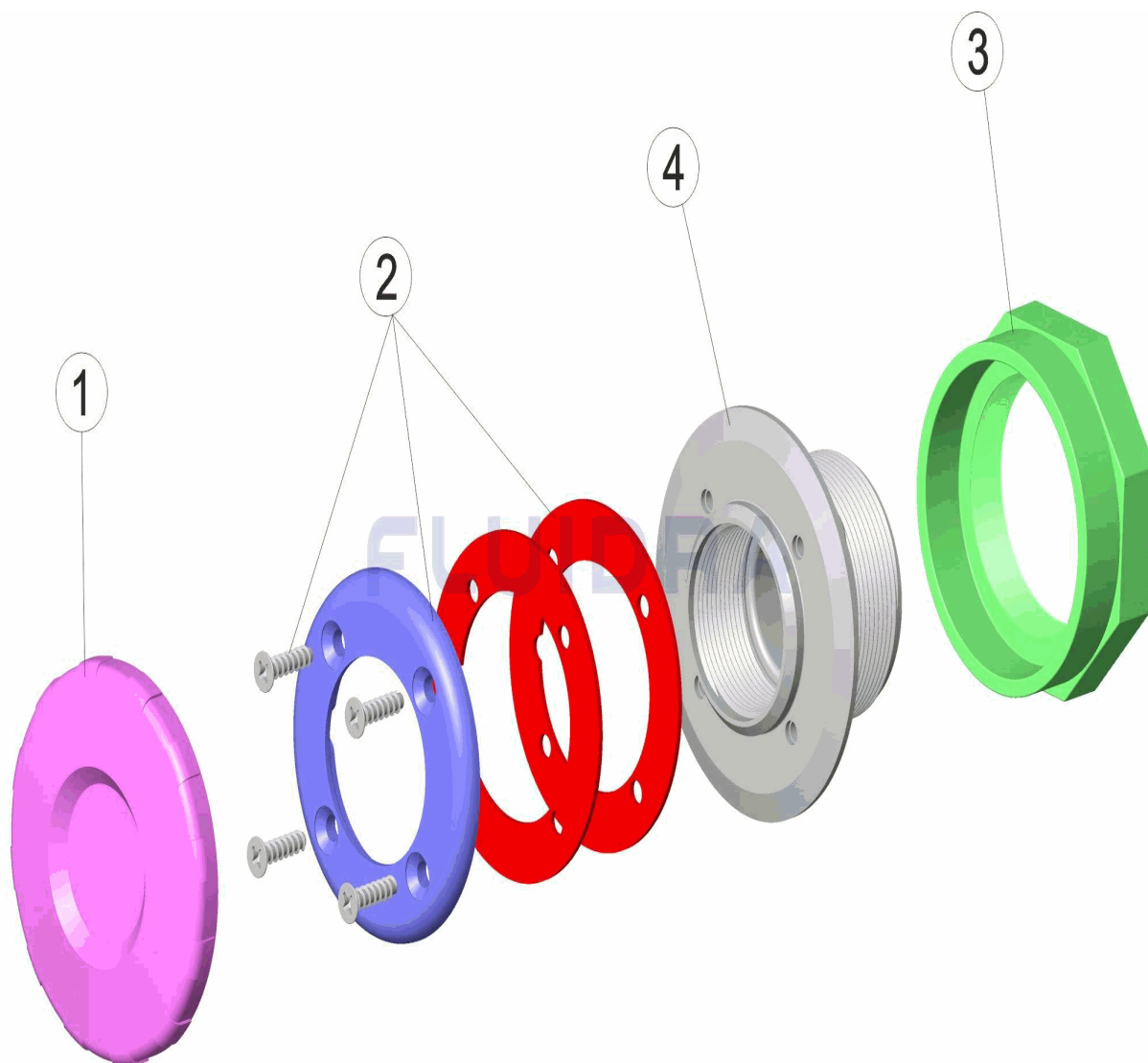
| POS | CODE | DESCRIPTION | QUANTITY | POS | CODE | DESCRIPTION | QUANTITY |
|-----|------------|---------------------------------|----------|-----|--------------|---------------------------------------|----------|
| 1 | 4402044901 | INLET CAP | | 4 | * 31412R0001 | 100X42.5 NOZZLE BODY/LINER/INT.SOLVEN | |
| 2 | 4402044802 | RING AND GASKET FOR LINER POOLS | | 4 | * 25496R0001 | THREADED LINER NOZZLE BODY | |
| 3 | 4402045403 | HEXAGONAL BOLT 2" BS " | | | | | |

CODE **32386, 32387**DESCRIPTION: **SUCTION NOZZLE PREFAB POOL, LINER SOLVENT-WELD AND SCREW-IN****OBSERVATIONS**

| POS | CODE | OBSERVATIONS |
|-----|--------------|--------------|
| 4 | * 31412R0001 | FOR: 32386 |
| 4 | * 25496R0001 | FOR: 32387 |

CODICE **32386, 32387**

DESCRIZIONE: **BOCCHETTA ASPIRAZIONE PISC. PREF. LINER INCOLLARE E FILETTARE**



ITALIANO

| POS | CODICE | DESCRIZIONE | QUANTITA' | POS | CODICE | DESCRIZIONE | QUANTITA' |
|-----|------------|--------------------------------------|-----------|-----|--------------|--|-----------|
| 1 | 4402044901 | COPERCHIO BOCCHETTA | | 4 | * 31412R0001 | CORPO BOCCHETTA 100X42,5/LINER/INT. II | |
| 2 | 4402044802 | COPRIFLANGIA E GUARNIZIONE PISC. PRI | | 4 | * 25496R0001 | CORPO BOCCHETTONE LINER PER FILETT | |
| 3 | 4402045403 | GHIERA ESAGONALE 2 | | | | | |

CODICE 32386, 32387

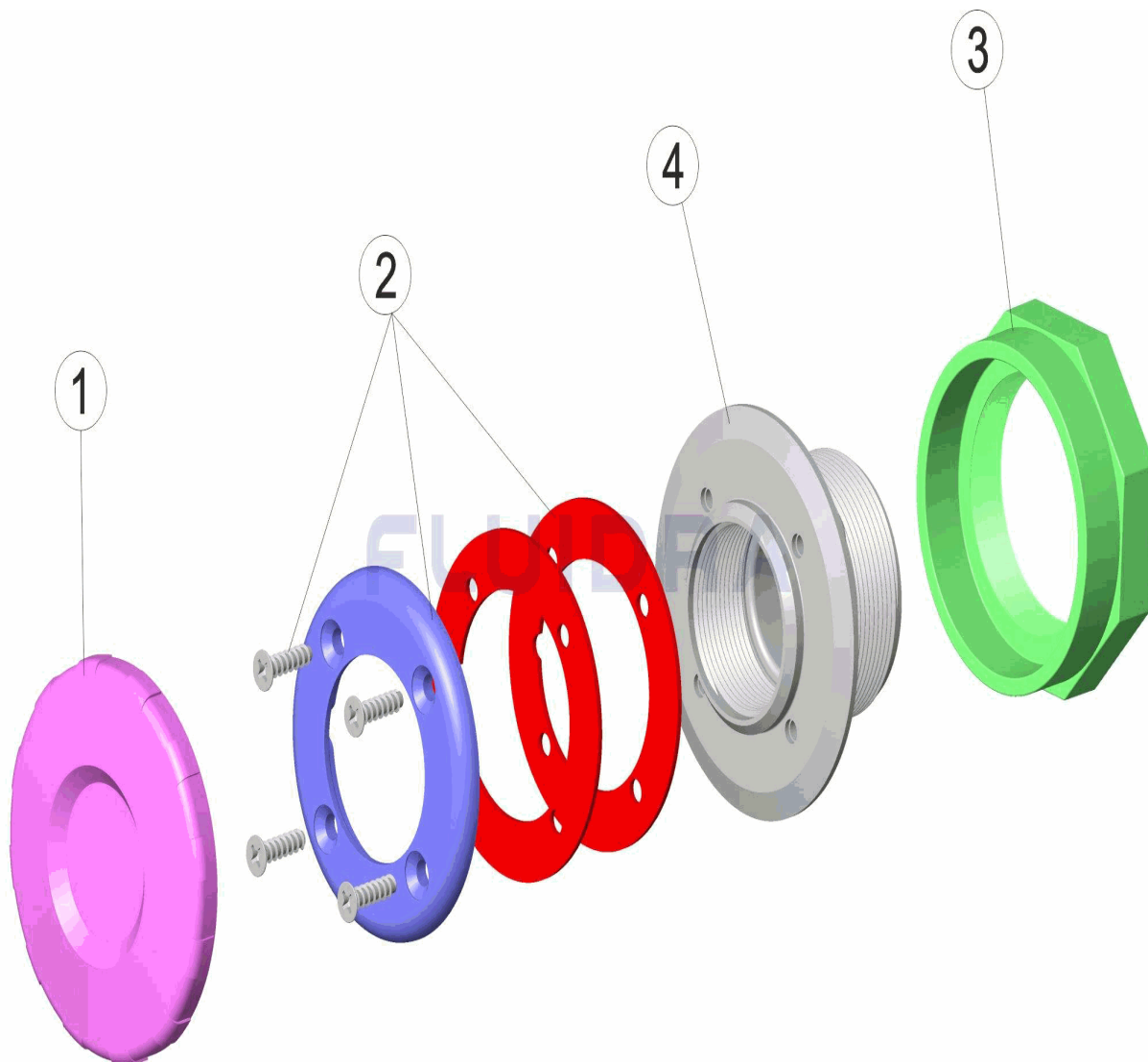
DESCRIZIONE: BOCCHETTA ASPIRAZIONE PISC. PREF. LINER INCOLLARE E FILETTARE

OSSERVAZIONI

| POS | CODICE | OSSERVAZIONI |
|-----|--------------|--------------|
| 4 | * 31412R0001 | PER: 32386 |
| 4 | * 25496R0001 | PER: 32387 |

CODE **32386, 32387**

BESCHREIBUNG: **SAUGDÜSE FERTIGBECKEN/FOLIENBECKEN ZUM KLEBEN MIT GEWIN**



DEUTSCH

| POS | CODE | BESCHREIBUNG | MENGE | POS | CODE | BESCHREIBUNG | MENGE |
|-----|------------|-------------------------------|-------|-----|--------------|---------------------------------------|-------|
| 1 | 4402044901 | STOPFEN DÜSE | | 4 | * 31412R0001 | GEHÄUSE DÜSE 100 X 42,5/FOLIE/INT.ZUM | |
| 2 | 4402044802 | RING UND DICHUNG FERTIGBECKEN | | 4 | * 25496R0001 | GEHÄUSE DÜSE FOLIE GEWINDE | |
| 3 | 4402045403 | SECHSKANTMUTTER 2" BS " | | | | | |

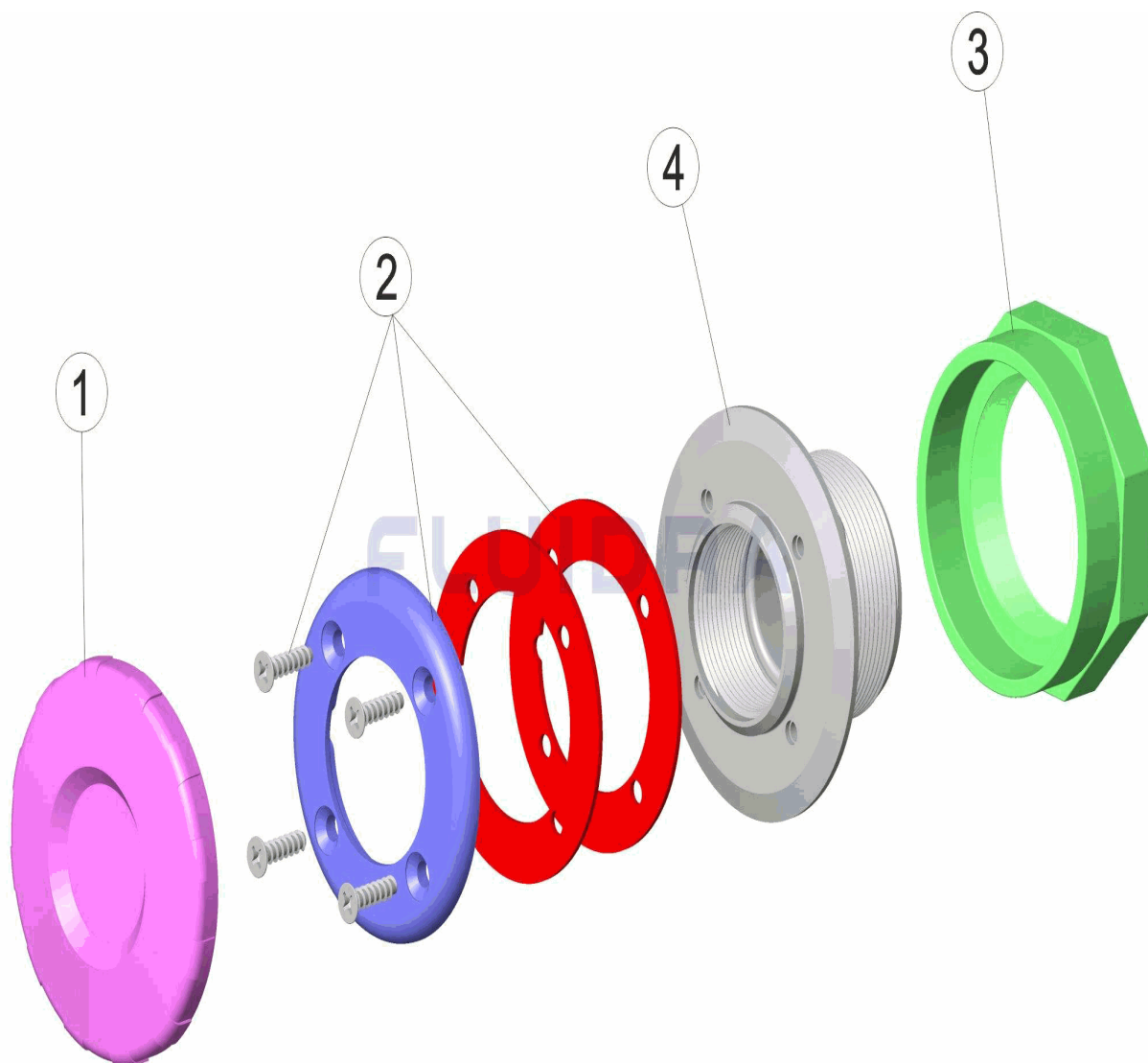
CODE **32386, 32387**

BESCHREIBUNG: **SAUGDÜSE FERTIGBECKEN/FOLIENBECKEN ZUM KLEBEN MIT GEWIN**

HINWEISE

| POS | CODE | HINWEISE |
|-----|--------------|------------|
| 4 | * 31412R0001 | FÜR: 32386 |
| 4 | * 25496R0001 | FÜR: 32387 |

CODIGO **32386, 32387**

 DESCRIÇÃO: **BOQUILHA ASPIRAÇÃO PIS. PRÉ-F, LINER UNIR E ENROSCAR**

PORTUGUES

| POS | CODIGO | DESCRIÇÃO | JANTIDADE | POS | CODIGO | DESCRIÇÃO | JANTIDADE |
|-----|------------|-----------------------------------|-----------|-----|--------------|---------------------------------------|-----------|
| 1 | 4402044901 | TAMPÃO BOCA | | 4 | * 31412R0001 | PEÇA BOCAL 100X42,5/LINER/INT. COLÁVE | |
| 2 | 4402044802 | ARO E JUNTA PISCINA PRE-FABRICADA | | 4 | * 25496R0001 | CORPO PEÇA DE LIGAÇÃO LINER ROSCA F | |
| 3 | 4402045403 | PORCA HEXAGONAL 2" BS " | | | | | |

CODIGO 32386, 32387

DESCRIÇÃO: BOQUILHA ASPIRAÇÃO PIS. PRÉ-F, LINER UNIR E ENROSCAR

OBSERVACÕES

| POS | CODIGO | OBSERVACÕES |
|-----|--------------|-------------|
| 4 | * 31412R0001 | PARA: 32386 |
| 4 | * 25496R0001 | PARA: 32387 |