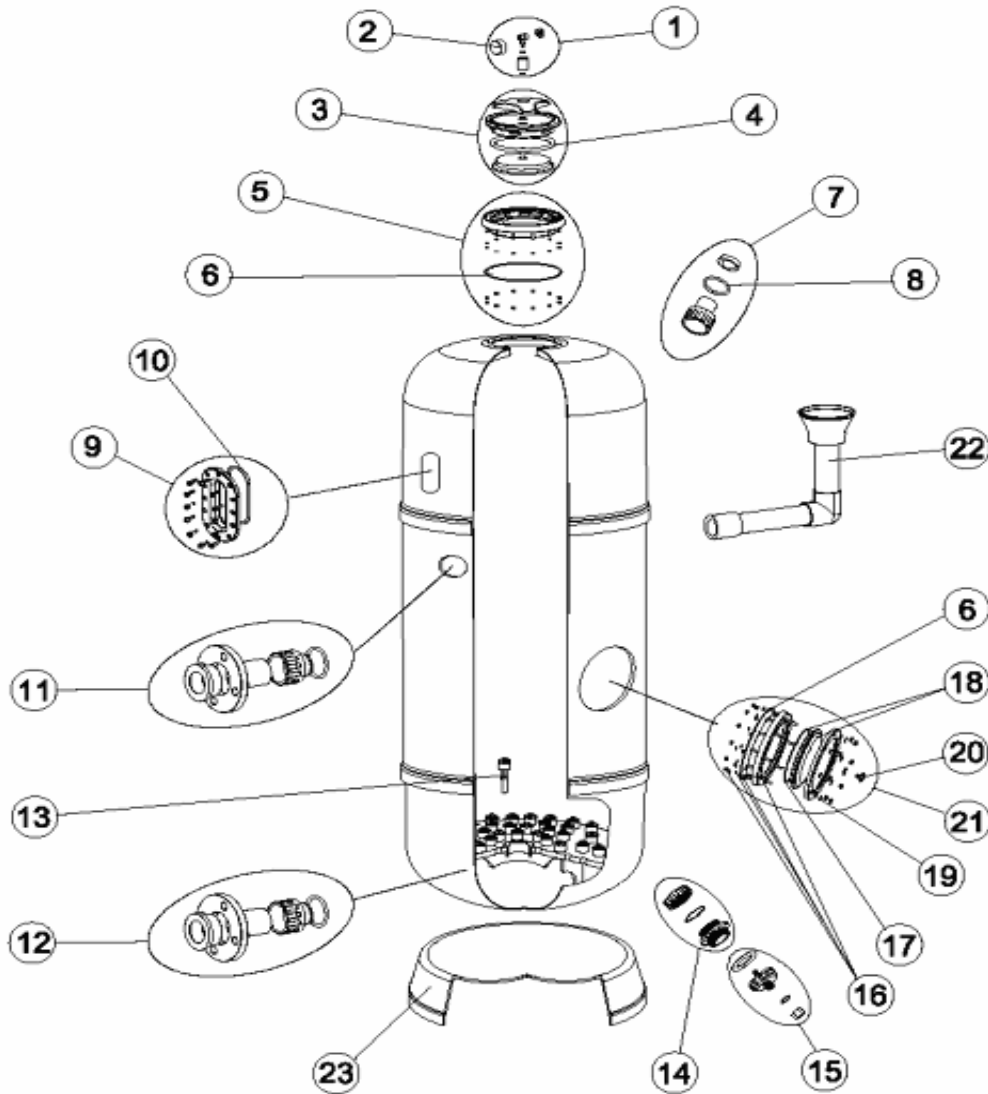


CODE **08142, 08143**

BESCHREIBUNG: **FILTER NORMA D. 650-800-1000-1200**



DEUTSCHE

POS	CODE	BESCHREIBUNG	POS	CODE	BESCHREIBUNG
1	4404190101	MANOMETER 1/8" KOMPLETT	14	4404260501	MUFFE ENTLERUNG
2	4404010103	"MANOMETER 1/8"" 3 KG./CM"	15	4404180114	"ENTLEERUNG 2""
3	4404020102	DECKEL RAPID KOMPLETT	16	4404160809	ANSATZRING 20 SCHRAUBEN
4	4404020111	DECKELDICHTUNG	17	4404260106	DICHTUNG FÜR BEFESTIGUNGRING TOP-VENTIL
5	4404020108	EINSATZ RAPID DECKEL KOMPLETT	18	4404160847	FILTERDECKEL D. 220 SCHWARZ
6	4404020116	O-RING 255X4	19	4404160849	BLENDENSATZ DECKEL
7	4404302801	ENTLÜFTUNGSSET	20	4404040113	KAPPE ENTLERUNG UND DICHTUNG
8	4404301901	O-RING D.56.3X5.3 EPDM 65	21	4404020014	SANDENTLEERUG
9	4404100000	SET SCHAUGLAS	22	* 4404100005	OBERER WASSERVERTEILER D. 650-90/75
10	4404301916	O-RING D 110,5X5,6	22	* 4404100006	OBERER WASSERVERTEILER D. 800-90/75
11	4404260218	"SET AUSLAUF D. 90 - 3"	23	* 08142R0152	FUSS FILTER D 650
12	4404260421	FILTERANSCHLÜSSE D.75 VOLCANO	23	* 08143R0150	FUSS FILTER D 800
13	* 4404161535	CREPINA 0,5 MM			

CODE **08142, 08143**

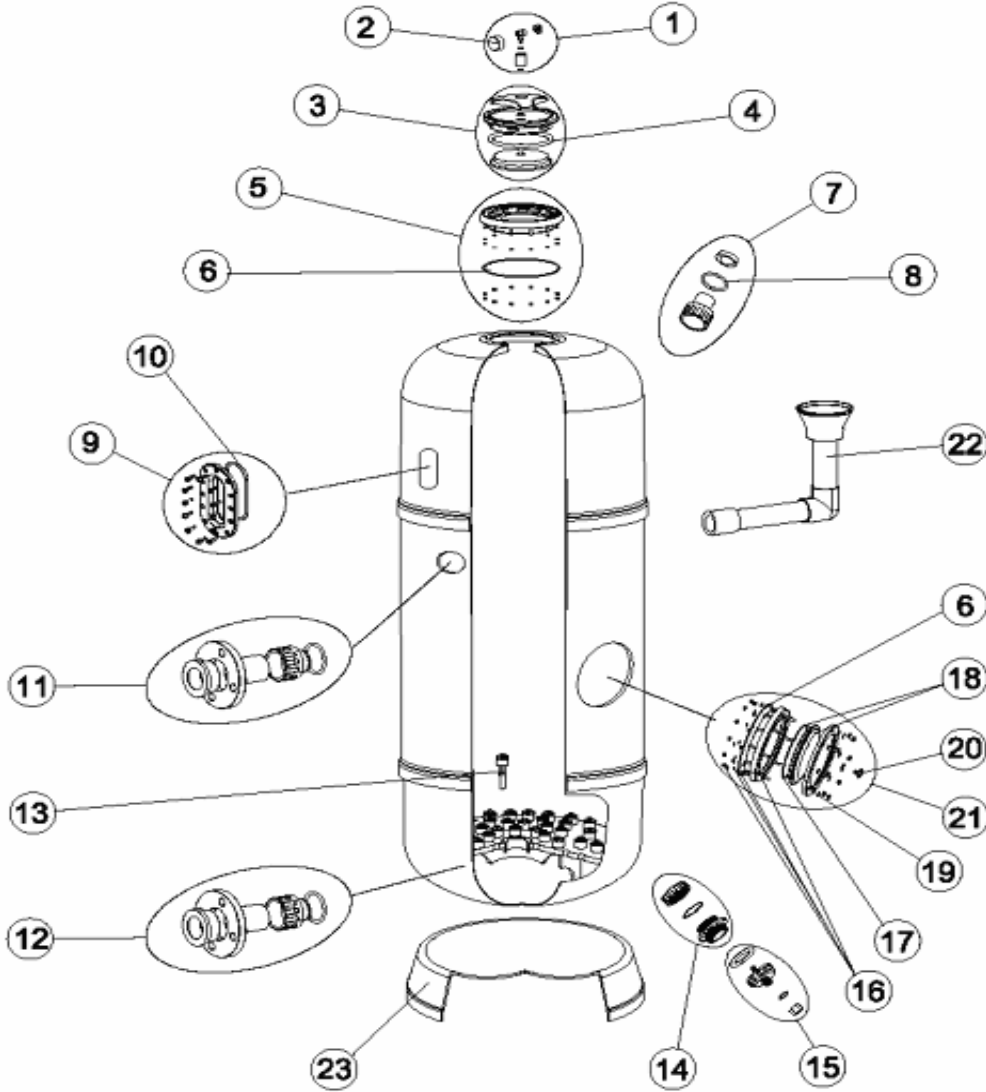
BESCHREIBUNG: **FILTER NORMA D. 650-800-1000-1200**

HINWEISE

POSICIÓN	PIEZA	OBSERVACIÓN
13	4404161535	PARA (08142-22) (08143-40)
22	4404100005	PARA 08142
22	4404100006	PARA 08143
23	08142R0152	PARA 08142
23	08143R0150	PARA 08143

CODE **08142, 08143**

DESCRIPTION: **NORMA FILTERS D. 650-800-1000-1200**



ENGLISH

POS	CODE	DESCRIPTION	POS	CODE	DESCRIPTION
1	4404190101	PRESSURE GAUGE UNIT 1/8"	14	4404260501	BUSH FOR DISCHARGE
2	4404010103	*PRESSURE GAUGE 1/8" 3 KG./CM"	15	4404180114	SAND PURGE 2"
3	4404020102	QUICK CLOSING LID UNIT	16	4404160809	20-SCREW NECK RING
4	4404020111	LID GASKET	17	4404260106	VALVE TOP RING FIXING GASKET
5	4404020108	LID RING UNIT	18	4404160847	FILTER LID D. 220 BLACK
6	4404020116	'O' RING 255X4	19	4404160849	LIF FIXING RING
7	4404302801	DRAIN SET	20	4404040113	DRAIN PLUG AND GASKET
8	4404301901	O RING D.56,3X5,3 EPDM65	21	4404020014	SAND UNLOAD
9	4404100000	VISOR ASSEMBLY	22	* 4404100005	DIFFUSER ASSEMBLY D. 650-90/75
10	4404301916	'O' RING D. 110,5X5,6	22	* 4404100006	DIFFUSER ASSEMBLY D. 800-90/75
11	4404260218	D. 90 - 3" OUTLET ASSEMBLY	23	* 08142R0152	FILTER BASE D. 650
12	4404260421	SET OUTLET D.75 VOLCANO	23	* 08143R0150	FILTER BASE D. 800
13	* 4404161535	STRAINER 0,5 MM			

CODE **08142, 08143**

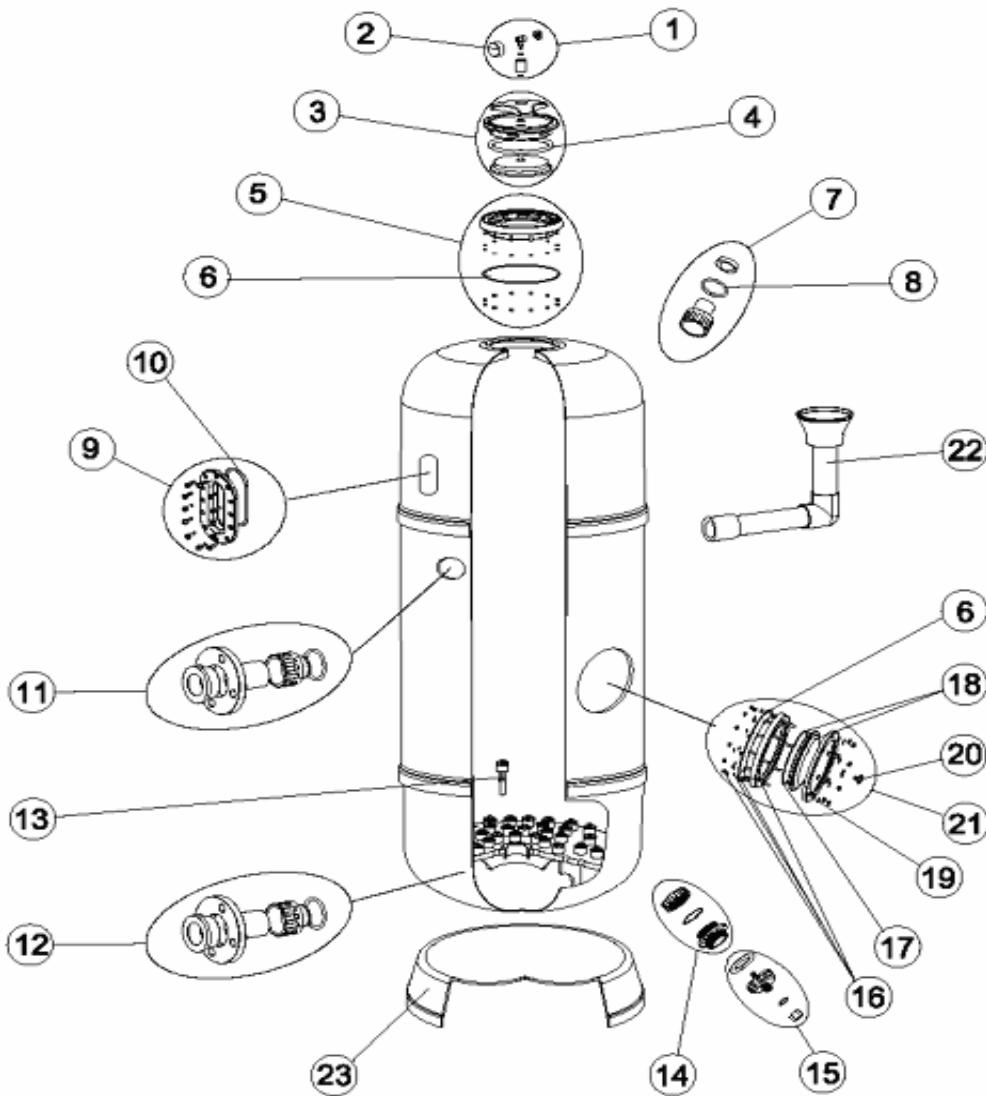
DESCRIPTION: **NORMA FILTERS D. 650-800-1000-1200**

OBSERVATIONS

POSICIÓN	PIEZA	OBSERVACIÓN
13	4404161535	PARA (08142-22) (08143-40)
22	4404100005	PARA 08142
22	4404100006	PARA 08143
23	08142R0152	PARA 08142
23	08143R0150	PARA 08143

CODIGO **08142, 08143**

DESCRIPCION: **FILTROS NORMA D. 650-800**



ESPAÑOL

POS	CODIGO	DESCRIPCION	POS	CODIGO	DESCRIPCION
1	4404190101	MANOMETRO 1/8" COMPLETO	14	4404260501	MANGUITO BOCA DESCARGA
2	4404010103	MANOMETRO 1/8" 3 KG./CM	15	4404180114	PURGA ARENA 2"
3	4404020102	TAPA RAPID COMPLETA	16	4404160809	ARO CUELLO 20 TORNILLOS
4	4404020111	JUNTA TAPA	17	4404260106	JUNTA ARO FIJACION VALVULA
5	4404020108	ARO TAPA COMPLETO	18	4404160847	TAPA FILTRO D. 220 NEGRA
6	4404020116	JUNTA TORICA 255X4	19	4404160849	ARO FIJACION TAPA
7	4404302801	CJTO. PURGA	20	4404040113	TAPON PURGA Y JUNTA
8	4404301901	JUNTA TORICA RACCOR SALIDA EPDM 65	21	4404020014	CJTO. DESCARGA ARENA FILTRO
9	4404100000	CJTO. MIRILLA	22	* 4404100005	CJTO. DIFUSOR D. 650-90/75
10	4404301916	JUNTA TORICA MIRILLA	22	* 4404100006	CJTO. DIFUSOR D. 800-90/75
11	4404260218	CJTO. SALIDA D. 90 - 3"	23	* 08142R0152	PIE FILTRO D. 650
12	4404260421	GRUPO SALIDA D. 75 VOLCANO	23	* 08143R0150	PIE FILTRO D. 800
13	* 4404161535	CREPINA 0,5 MM			

CODIGO **08142, 08143**

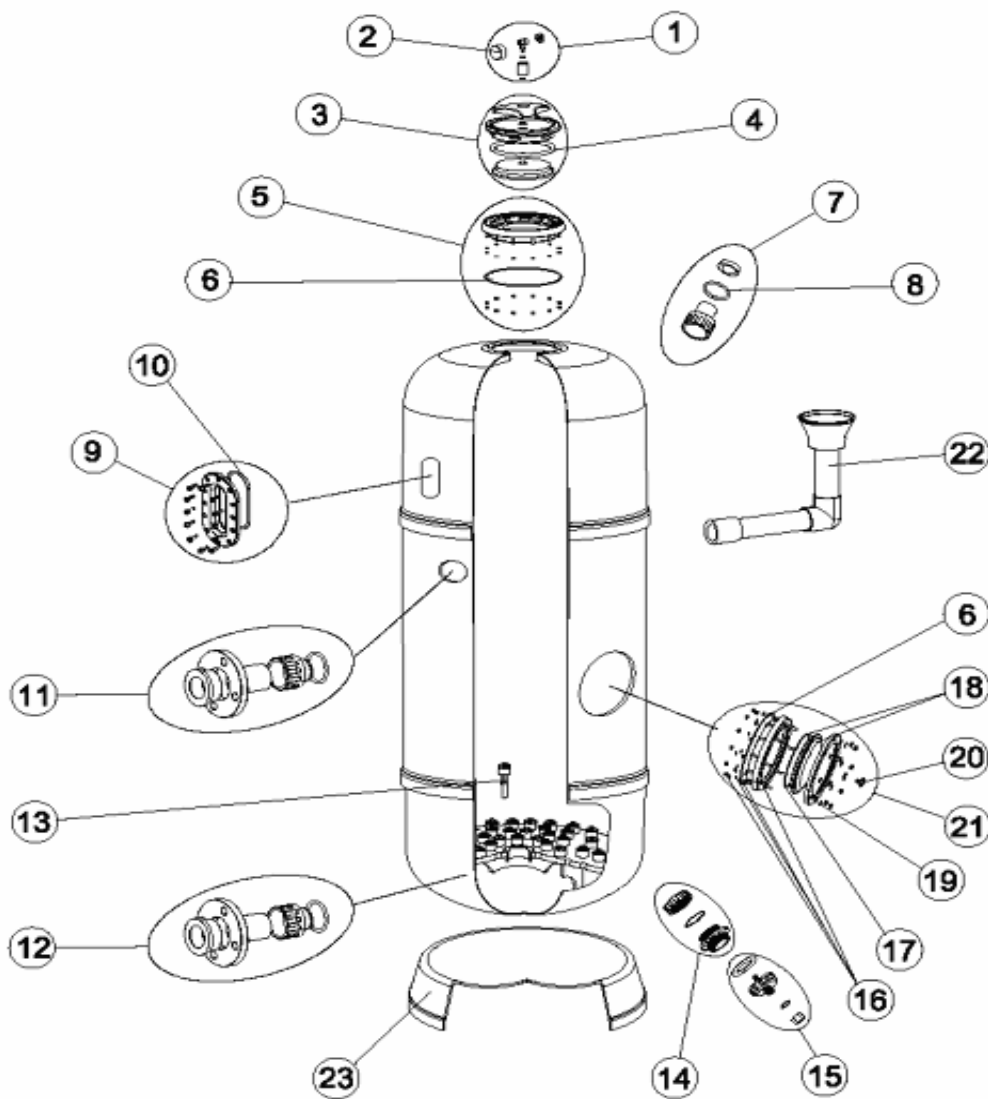
DESCRIPCION: **FILTROS NORMA D. 650-800**

OBSERVACIONES

POSICIÓN	PIEZA	OBSERVACIÓN
13	4404161535	PARA (08142-22) (08143-40)
22	4404100005	PARA 08142
22	4404100006	PARA 08143
23	08142R0152	PARA 08142
23	08143R0150	PARA 08143

CODE **08142, 08143**

DESCRIPTION: **FILTRES NORMA D. 650-800-1000-1200**



FRANCAIS

POS	CODE	DESCRIPTION	POS	CODE	DESCRIPTION
1	4404190101	MANOMETRE 1/8" COMPLET	14	4404260501	RACCORD DÉCHARGE
2	4404010103	"MANOMETRE 1/8" 3 KG./CM"	15	4404180114	"PURGE SABLE 2"
3	4404020102	COUVERCLE RAPID COMPLET	16	4404160809	BRIDE GORGE 20 VIS
4	4404020111	JOINT DE COUVERCLE	17	4404260106	JOINT BRIDE FIXATION VANNE TOP
5	4404020108	BRIDE DE COUVERCLE COMPLETE	18	4404160847	COUVERCLE FILTRE D. 220 NOIR
6	4404020116	JOINT TORIQUE 255X4	19	4404160849	BRIDE DE FIXATION COUVERCLE
7	4404302801	ENSEMBLE PURGE	20	4404040113	BOUCHON PURGE ET JOINT
8	4404301901	JOINT TORIQUE RACCORD SORTIE D.56,3X5,3 EPDM 65	21	4404020014	DÉCHARGE DE SABLE
9	4404100000	ENSEMBLE VOYANT	22	*4404100005	ENSEMBLE DIFFUSEUR D. 650-90/75
10	4404301916	JOINT TORIQUE D 110,5X5,6	22	*4404100006	ENSEMBLE DIFFUSEUR D. 800-90/75
11	4404260218	ENSEMBLE SORTIE D. 90 - 3"	23	*08142R0152	SOCLE FILTRE D 650
12	4404260421	ENSEMBLE SORTIE D. 75 VOLCANO	23	*08143R0150	SOCLE FILTRE D 800
13	*4404161535	CREPINE 0,5 MM			

CODE **08142, 08143**

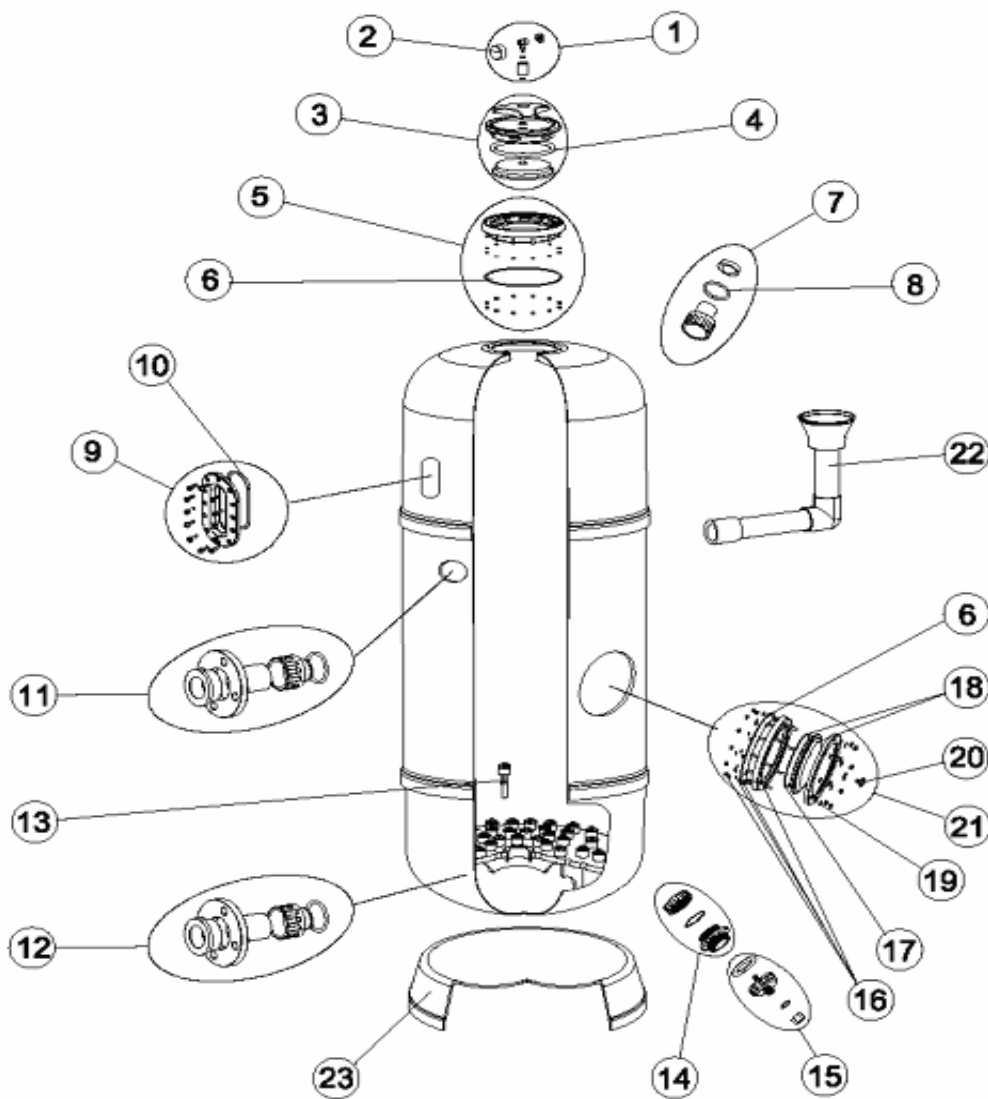
DESCRIPTION: **FILTRES NORMA D. 650-800-1000-1200**

OBSERVATIONS

POSICIÓN	PIEZA	OBSERVACIÓN
13	4404161535	PARA (08142-22) (08143-40)
22	4404100005	PARA 08142
22	4404100006	PARA 08143
23	08142R0152	PARA 08142
23	08143R0150	PARA 08143

CODICE **08142, 08143**

DESCRIZIONE: **FILTRI NORMA D. 650-800-1000-1200**



ITALIANO

POS	CODICE	DESCRIZIONE	POS	CODICE	DESCRIZIONE
1	4404190101	MANOMETRO 1/8" COMPLETO	14	4404260501	MANICOTTO SCARICA
2	4404010103	"MANOMETRO 1/8" 3 KG./CM"	15	4404180114	SCARICO SABBIA 2"
3	4404020102	COPERCHIO RAPID COMPLETO	16	4404160809	ANELLO COLLO 20 VITI
4	4404020111	GUARNIZIONE COPERCHIO	17	4404260106	GUARNIZIONE FLANGIA FISSAGGIO VALVOLE TOP
5	4404020108	FLANGIA COPERCHIO COMPLETO	18	4404160847	COPERCHIO FILTRO D. 220 NERO
6	4404020116	O-RING 255X4	19	4404160849	FLANGIA FISSAGGIO COPERCHIO
7	4404302801	KIT SCARICO	20	4404040113	TAPPO SPURGO E GUARNIZIONE
8	4404301901	O-RING RACCORDO USCITA D.56,3X5,3 EPDM 65	21	4404020014	SCARICA SABBIA
9	4404100000	GRUPPO SPIONCINO	22	* 4404100005	RACCORDO DIFFUSORE D. 650-90/75
10	4404301916	O-RING D 110,5X5,6	22	* 4404100006	RACCORDO DIFFUSORE D. 800-90/75
11	4404260218	GRUPPO USCITA D. 90 - 3"	23	* 08142R0152	BASE FILTRO D 650
12	4404260421	GRUPPO USCITA D.75 VOLCANO	23	* 08143R0150	BASE FILTRO D 800
13	* 4404161535	DIFFUSORE 0,5 MM			

CODICE **08142, 08143**

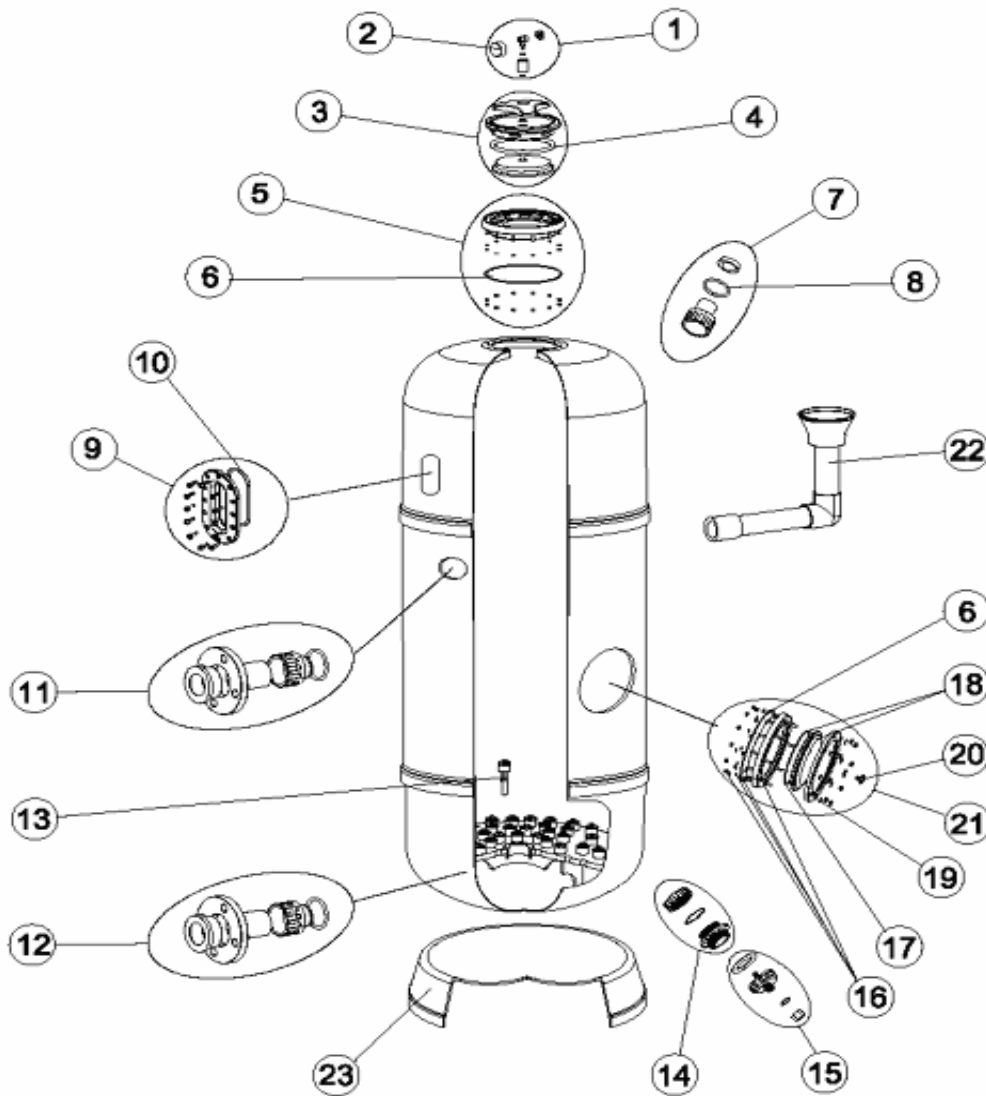
DESCRIZIONE: **FILTRI NORMA D. 650-800-1000-1200**

OSSERVAZIONI

POSICIÓN	PIEZA	OBSERVACIÓN
13	4404161535	PARA (08142-22) (08143-40)
22	4404100005	PARA 08142
22	4404100006	PARA 08143
23	08142R0152	PARA 08142
23	08143R0150	PARA 08143

CODIGO **08142, 08143**

DESCRIÇÃO: **FILTROS NORMA D. 650-800-1000-1200**



PORTUGUES

POS	CODIGO	DESCRIÇÃO	POS	CODIGO	DESCRIÇÃO
1	4404190101	MANÔMETRO 1/8" COMPLETO	14	4404260501	MANGUITO DESCARREGA
2	4404010103	"MANOMETRO 1/8" 3 KG./CM"	15	4404180114	PURGA AREIA 2"
3	4404020102	TAMPA RÁPIDA COMPLETA	16	4404160809	ARO PESCOCOÇO 20 PARAFUSOS
4	4404020111	JUNTA TAMPA	17	4404260106	JUNTA ARO FIXAÇÃO VALVULA TOP
5	4404020108	ARO TAMPA COMPLETO	18	4404160847	TAMPA FILTRO D.220 NEGRA
6	4404020116	JUNTA TÓRICA 255X4	19	4404160849	ARO FIXAÇÃO TAMPA
7	4404302801	CONJUNTO PURDA AREIA	20	4404040113	TAMPÃO PURGA E JUNTA
8	4404301901	JUNTA TÓRICA D.56.3X5.3 EPDM 65	21	4404020014	DESCARREGA AREIA
9	4404100000	CONJUNTO VIGIA	22	* 4404100005	CJTO. DIFUSOR D. 650-90/75
10	4404301916	JUNTA TÓRICA D110,5X5,6	22	* 4404100006	CJTO. DIFUSOR D. 800-90/75
11	4404260218	CONJUNTO SAÍDA D. 90 - 3"	23	* 08142R0152	PÉ FILTRO D 650
12	4404260421	RACORD DE SAÍDA D.75 VOLCANO	23	* 08143R0150	PÉ FILTRO D 800
13	* 4404161535	RALO 0,5 MM			

CODIGO 08142, 08143

DESCRIÇÃO: FILTROS NORMA D. 650-800-1000-1200

OBSERVAÇÕES

POSICIÓN	PIEZA	OBSERVACIÓN
13	4404161535	PARA (08142-22) (08143-40)
22	4404100005	PARA 08142
22	4404100006	PARA 08143
23	08142R0152	PARA 08142
23	08143R0150	PARA 08143