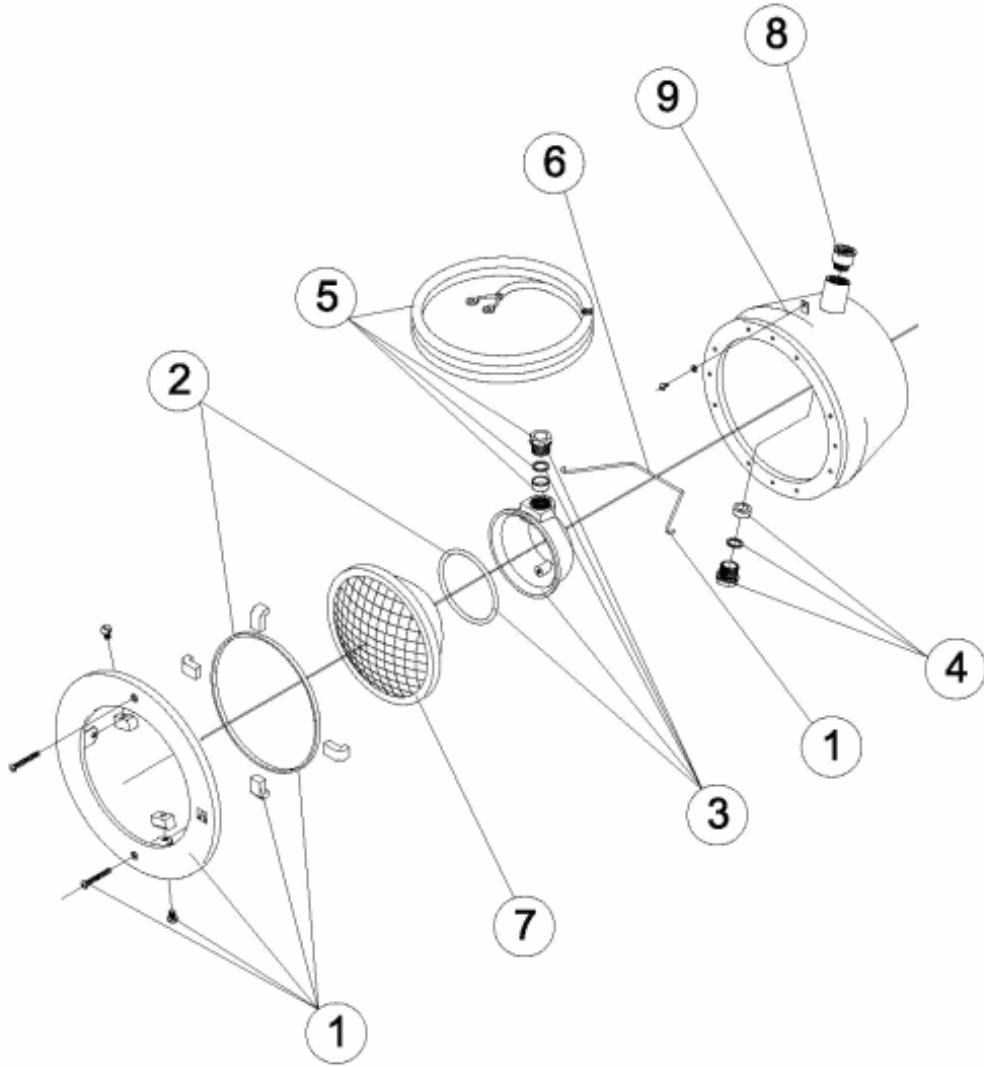


CODE **00358**

BESCHREIBUNG: **SCHEINWERFER D. 250**

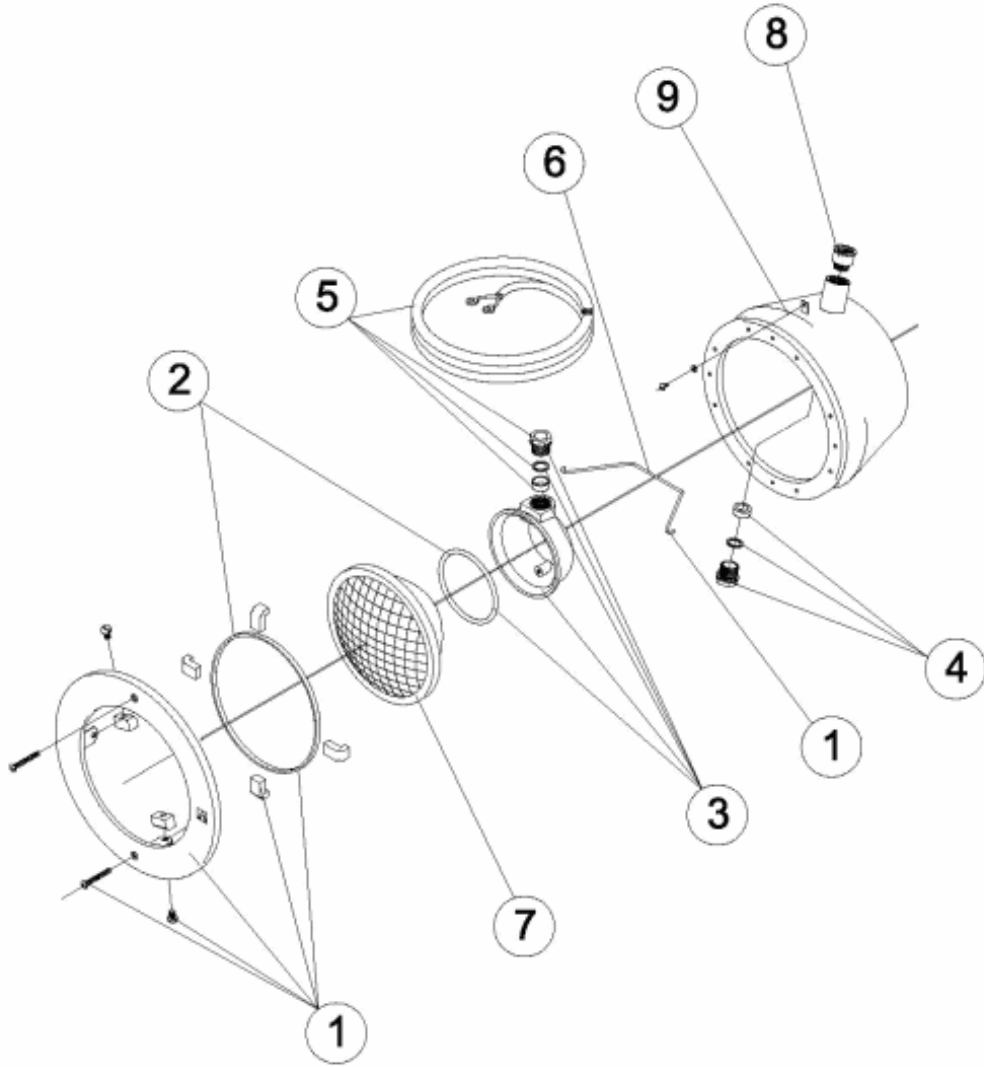


**DEUTCHE**

POS	CODE	BESCHREIBUNG	POS	CODE	BESCHREIBUNG
1	4403010501	BLENDENSATZ UWS D.250	6	4403010509	BÜGEL GEHÄUSE UWS
2	4403010503	O-RING + PROFIL LAMPENGEHÄUSE UWS	7	4403010058	LAMPE
3	4403010504	LAMPENGEHÄUSE UWS	8	07838R0002	MUFFE ADAPTER PG 16 - M 25
4	4403010505	QUETSCHVERSCHRAUBUNGSSATZ UWS	9	00358R0100	BODEN SCHEINWERFER
5	4403010508	KABEL UWS-VA			

CODE **00358**

DESCRIPTION: **LIGHT D. 250**

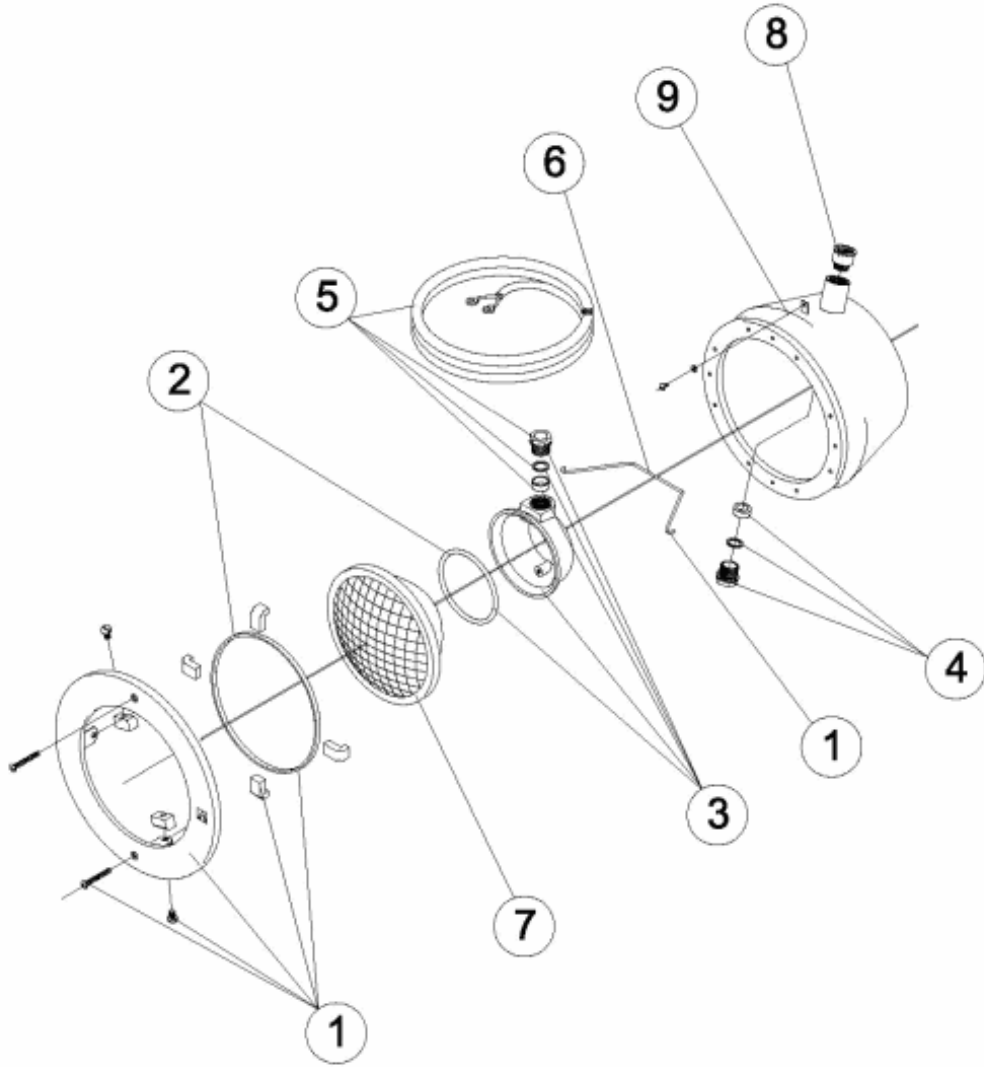


**ENGLISH**

POS	CODE	DESCRIPTION	POS	CODE	DESCRIPTION
1	4403010501	LAMP FIXING RING 250	6	4403010509	COVER FIXING SPRING
2	4403010503	GASKET + RUBBER PROFILE STRIP	7	4403010058	LIGHTBULB
3	4403010504	LIGHT CONNECTING COVER	8	07838R0002	HOSE ADAPTER PG 16 - M 25
4	4403010505	PACKING GLAND GASKET	9	00358R0100	DEEP END LIGHT
5	4403010508	LIGHT CABLE			

CODIGO **00358**

DESCRIPCION: **PROYECTOR D.250**

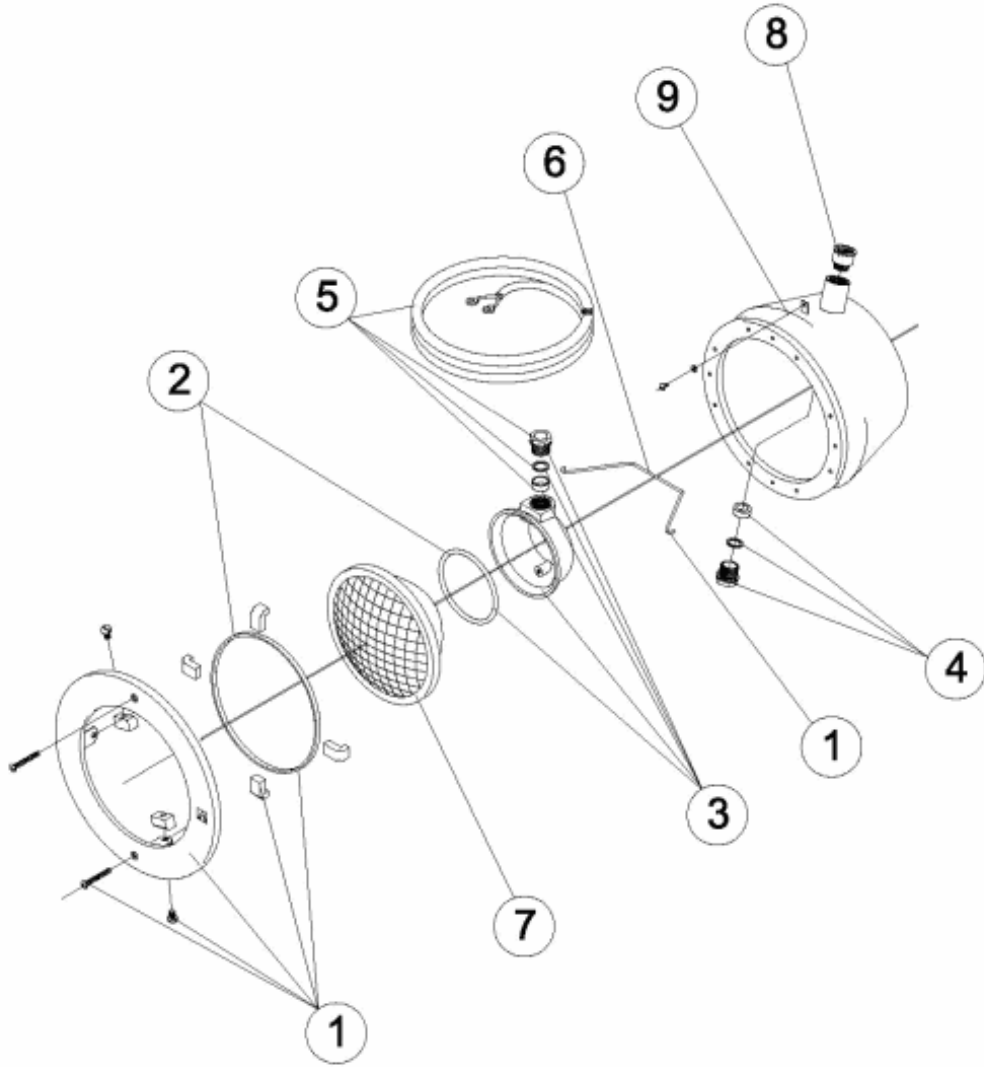


**ESPAÑOL**

POS	CODIGO	DESCRIPCION	POS	CODIGO	DESCRIPCION
1	4403010501	ARO FIJACION LAMPARA 250	6	4403010509	MUELLE FIJACION TAPA
2	4403010503	JUNTA + PERFIL	7	4403010508	LAMPARA 300W.12.V.
3	4403010504	TAPA CONEXIÓN LAMPARA	8	07838R0002	MANGUITO ADAPTADOR PG 16 - M 25
4	4403010505	PRENSAESTOPAS PROYECTOR	9	00358R0100	FONDO FOCO
5	4403010508	CABLE PROYECTOR			

CODE **00358**

DESCRIPTION: **PROJECTEUR D.250**

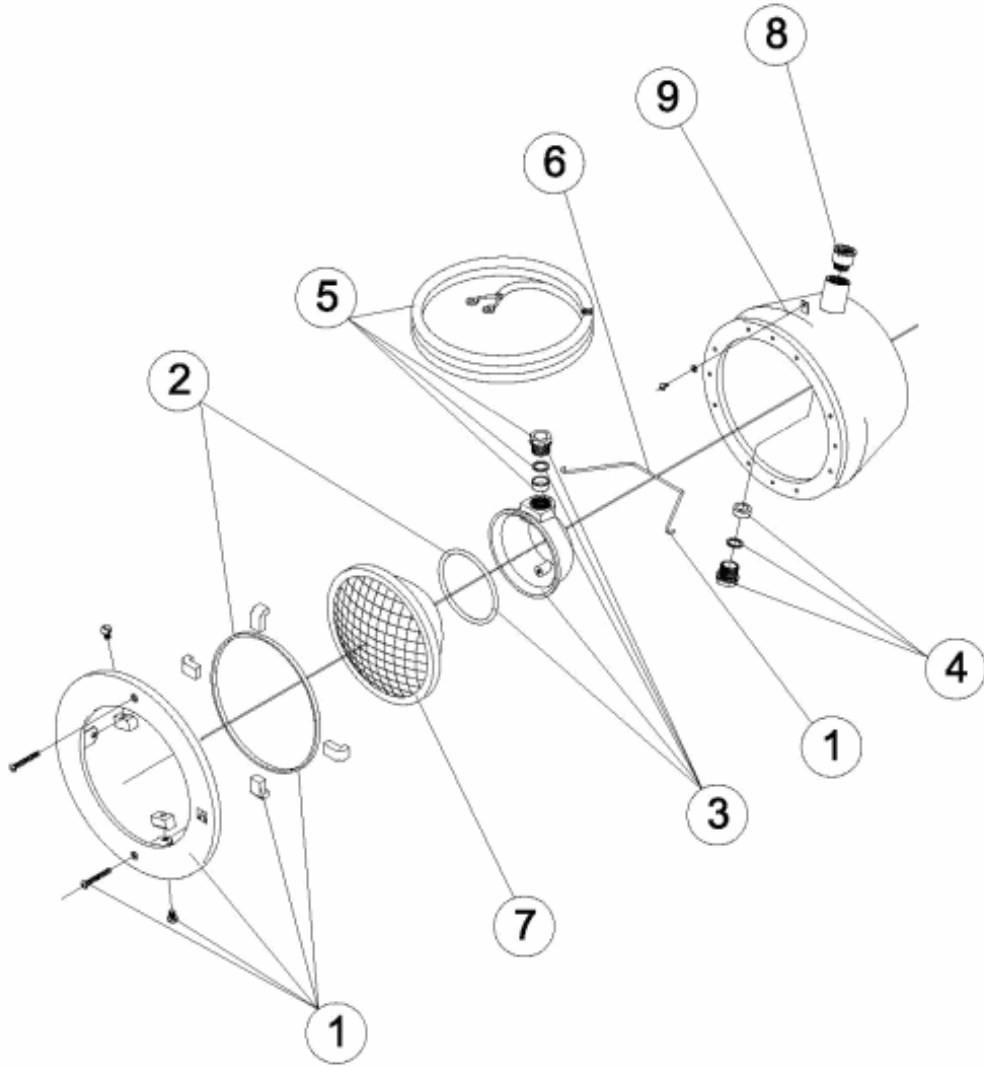


**FRANCAIS**

POS	CODE	DESCRIPTION	POS	CODE	DESCRIPTION
1	4403010501	BRIDE DE FIXATION LAMPE 250	6	4403010509	TIGE RESSORT POUR NICHE
2	4403010503	JOINT ET PROFIL	7	4403010058	LAMPE
3	4403010504	NICHE PROJECTEUR	8	07838R0002	TUYAU ADAPTATEUR PG 16 - M 25
4	4403010505	PRESSE ETOUPE	9	00358R0100	FOND PROJECTEUR
5	4403010508	CABLE PROJECTEUR			

CODICE **00358**

DESCRIZIONE: **PROIETTORE D.250**

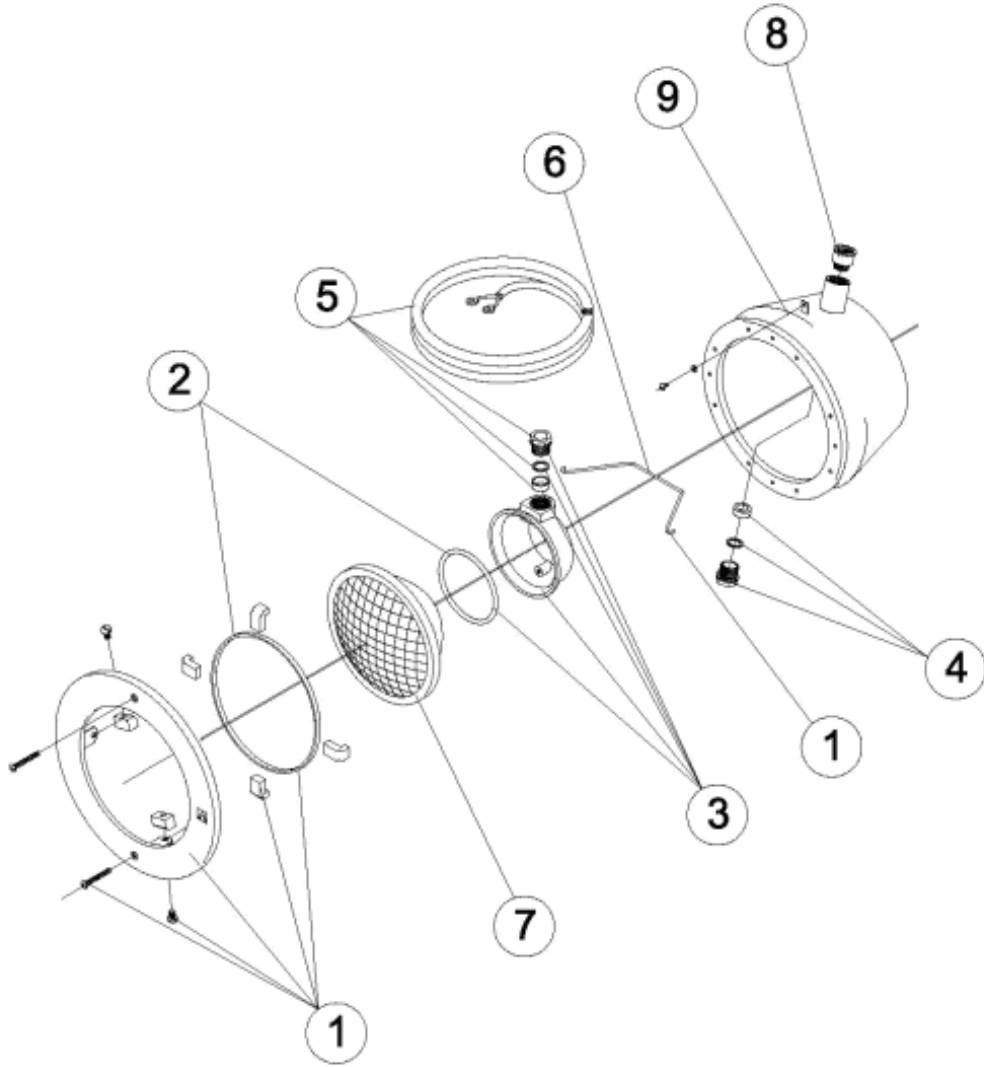


**ITALIANO**

POS	CODICE	DESCRIZIONE	POS	CODICE	DESCRIZIONE
1	4403010501	FLANGIA FISSAGGIO LAMPADA 250	6	4403010509	MOLLA FISSAGGIO COPERCHIO
2	4403010503	GUARNIZIONE + PROFILO	7	4403010508	LAMPADINA
3	4403010504	COPERCHIO COLLEGAMENTO LAMPADA	8	07838R0002	MANICOTTO ADATTATORE PG 16 - M 25
4	4403010505	GUARNIZIONE PRESSACAVI	9	00358R0100	FONDO FUOCO
5	4403010508	CAVO FARO			

CODIGO **00358**

DESCRIÇÃO: **PROJECTOR D. 250**



**PORTUGUES**

POS	CODIGO	DESCRIÇÃO	POS	CODIGO	DESCRIÇÃO
1	4403010501	ARO FIXAÇÃO LÂMPADA 250	6	4403010509	MOLA FIXAÇÃO TAMPA
2	4403010503	JUNTA + PERFIL	7	4403010058	BOMBILHA
3	4403010504	TAMPA LIGAÇÃO LÂMPADA	8	07838R0002	MANGA ADAPTADORA PG 16 - M 25
4	4403010505	JUNTA BUCIN	9	00358R0100	FOCO DE FUNDO
5	4403010508	CABO PROJECTOR			