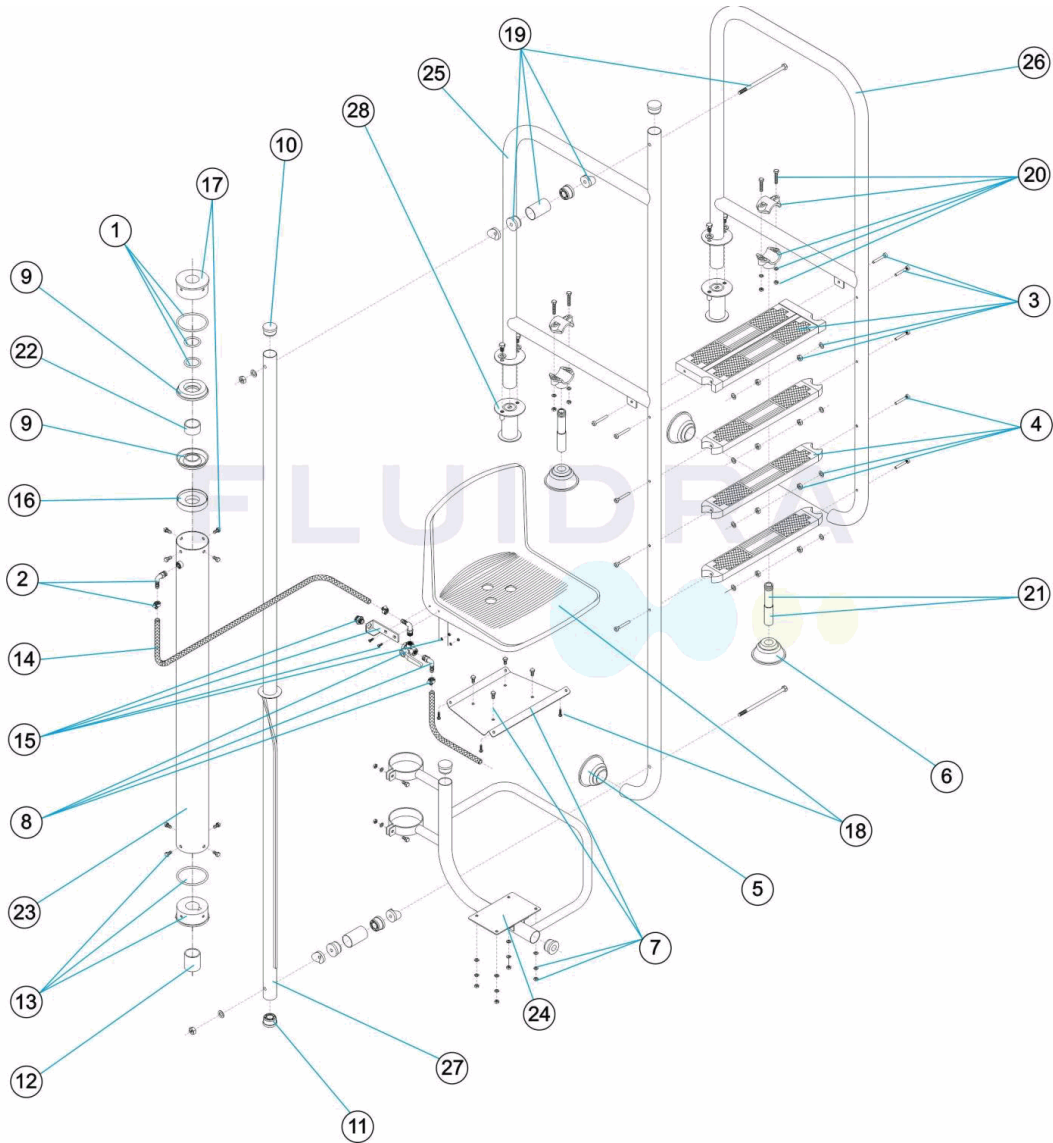


CODIGO **11277, 15219, 28619, 28620, 28621, 28622**

DESCRIPCION: **ELEVADOR HIDRÁULICO**



ESPAÑOL

POS	CODIGO	DESCRIPCION	POS	CODIGO	DESCRIPCION
1	4401011501	JUNTAS ELEVADOR	15	4401011515	SOPORTE VALVULA
2	4401011502	CODO Y BRIDA	16	4401011516	APOYO JUNTA
3	4401011503	PELDAÑO SEGURIDAD ELEVADOR	17	4401011517	TAPA GUIA SUPERIOR
4	4401011504	PELDAÑO LUXE ELEVADOR	18	4401011518	ASIENTO
5	4401010501	TOPE ARTICULADO	19	4401011519	CJTO. ENLACE UNION
6	4401011506	TOPE ARTICULADO D.28	20	4401011520	BRIDA APOYO
7	4401011507	PLACA ASIENTO	21	4401011521	TUBO APOYO
8	4401011508	VALVULA 3 VIAS COMPLETA	22	4401011505	CASQUILLO TOPE INFERIOR
9	4401011509	JUNTA ELEVADOR	23	11277R0600	CILINDRO ELEVADOR HIDRAULICO
10	4401070208	CASQUILLO TAPADO	24	11277R0400	SOPORTE ASIENTO
11	4401050402	CASQUILLOS GUIA	25	* 11277R0800	PASAMANO LARGO L=1000
12	4401011512	CASQUILLO DE SEGURIDAD	25	* 15219R0100	PASAMANO LARGO L=650
13	4401011513	CASQUILLO GUIA	26	* 11277R0900	PASAMANO CORTO L=1000

*** -> VER HOJA DE OBSERVACIONES**

CODIGO 11277, 15219, 28619, 28620, 28621, 28622

DESCRIPCION: ELEVADOR HIDRÁULICO

14	4401011514	TUBO ENTRADA 0,9 M	26	* 15219R0200	PASAMANO CORTO L=650
27	11277R0100	CONJUNTO TUBO GUIA	28	00143	ANCLAJE

CODIGO 11277, 15219, 28619, 28620, 28621, 28622

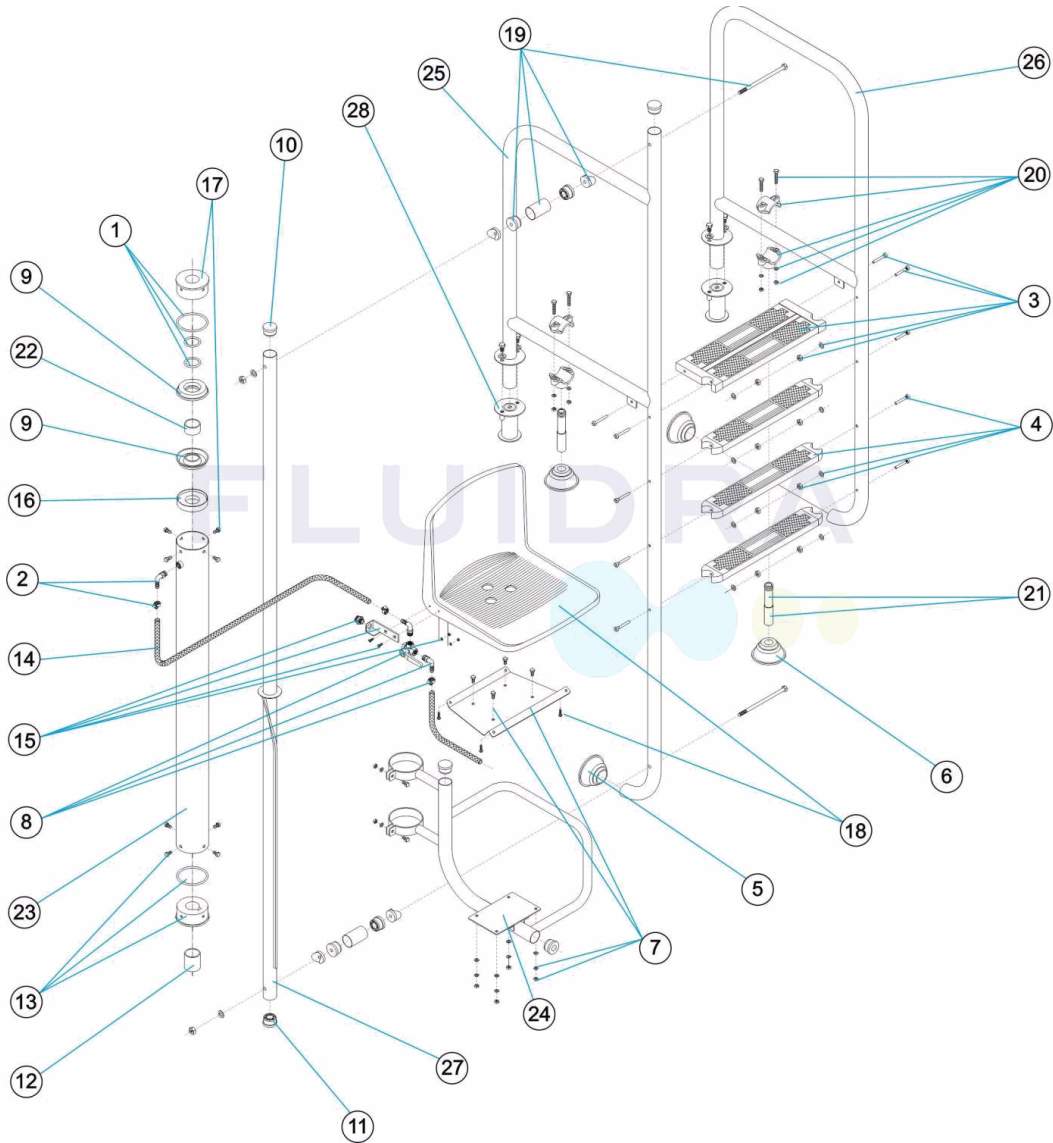
DESCRIPCION: ELEVADOR HIDRÁULICO

OBSERVACIONES

POS	CODIGO	OBSERVACIONES
25	11277R0800	PARA: 11277, 28620
25	15219R0100	PARA: 15219, 28619
26	11277R0900	PARA: 11277, 28620
26	15219R0200	PARA: 15219, 28619

CODE **11277, 15219, 28619, 28620, 28621, 28622**

DESCRIPTION: **ÉLÉVATEUR HYDRAULIQUE**



FRANCAIS

POS	CODE	DESCRIPTION	POS	CODE	DESCRIPTION
1	4401011501	JOINT ELEVATEUR	15	4401011515	SUPPORT VANNE
2	4401011502	COUDE ET BRIDE	16	4401011516	SUPPORT DE JOINT
3	4401011503	MARCHE SECURITE ELEVATEUR	17	4401011517	COUVERCLE GUIDE SUPERIEUR
4	4401011504	MARCHE LUXE ELEVATEUR	18	4401011518	SEAT
5	4401010501	TAMPON ARTICULÉ	19	4401011519	ENSEMBLE RACCORD UNION
6	4401011506	TAMPON ARTICULÉ D 28	20	4401011520	BRIDE DE SUPPORT
7	4401011507	PLAQUE SUPPORT DE SIEGE	21	4401011521	TUBE DE SUPPORT
8	4401011508	VANNE 3 VOIES COMPLETE	22	4401011505	DOUILLES
9	4401011509	JOINT ELEVATEUR	23	11277R0600	CYLINDRE ÉLÉVATEUR
10	4401070208	BOUCHONS	24	11277R0400	PROTECTION SIÈGE
11	4401050402	DOUILLES	25	* 11277R0800	MAIN COURAGE LARGE L=1000
12	4401011512	DOUILLE DE SÉCURITÉ	25	* 15219R0100	MAIN COURAGE LARGE L=650
13	4401011513	DOUILLE GUIDE	26	* 11277R0900	MAIN COURANTE COURTE L=1000

*** -> VOIR FICHE D'OBSERVATIONS**

CODE **11277, 15219, 28619, 28620, 28621, 28622**

DESCRIPTION: **ÉLÉVATEUR HYDRAULIQUE**

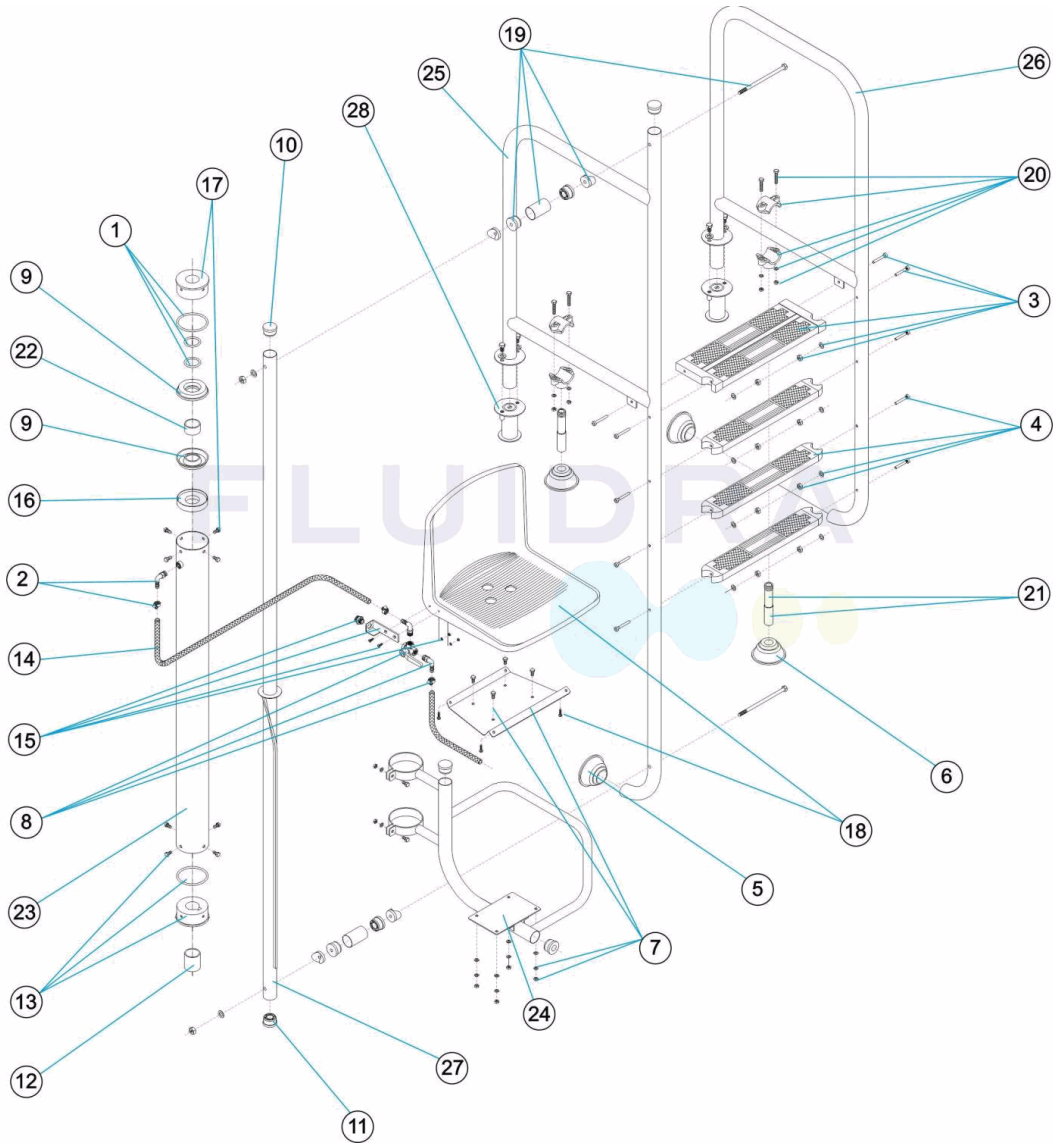
14	4401011514	TUBE ENTRÉE 0,9 M.	26	* 15219R0200	MAIN COURANTE COURTE L=650
27	11277R0100	ENSEMBLE TUBE GUIDE	28	00143	ANCRAGE

CODE **11277, 15219, 28619, 28620, 28621, 28622**DESCRIPTION: **ÉLÉVATEUR HYDRAULIQUE****OBSERVATIONS**

POS	CODE	OBSERVATIONS
25	11277R0800	POUR: 11277, 28620
25	15219R0100	POUR: 15219, 28619
26	11277R0900	POUR: 11277, 28620
26	15219R0200	POUR: 15219, 28619

CODE **11277, 15219, 28619, 28620, 28621, 28622**

DESCRIPTION: **HYDRAULIC LIFT**



ENGLISH

POS	CODE	DESCRIPTION	POS	CODE	DESCRIPTION
1	4401011501	LIFTER GASKETS	15	4401011515	VALVE SUPPORT
2	4401011502	ELBOW AND FLANGE	16	4401011516	SEAL SUPPORT
3	4401011503	LIFTER SAFETY TREAD	17	4401011517	SUPERIOR GUIDE COVER
4	4401011504	LIFTER DELUXE TREAD	18	4401011518	SIÈGE
5	4401010501	ARTICULATED FOOT PAD	19	4401011519	UNION KIT
6	4401011506	ARTICULATED FOOT PAD D 28	20	4401011520	SUPPORT DASP
7	4401011507	CHAIR PLATE	21	4401011521	SUPPORT PIPE
8	4401011508	COMPLETE 3-WAY VALVE	22	4401011505	SOCKETS
9	4401011509	LIFTER GASKET	23	11277R0600	HYDRAULIC CYLINDER TUBE
10	4401070208	PLUG	24	11277R0400	SEAT SUPPORT
11	4401050402	BUSHES	25	* 11277R0800	LARGE HANDRAIL L=1000
12	4401011512	SECURITY SOCKET	25	* 15219R0100	LARGE HANDRAIL L=650
13	4401011513	GUIDE SOCKET	26	* 11277R0900	SMALL HANDRAIL L=1000

*** -> SEE OBSERVATIONS SHEET**

CODE **11277, 15219, 28619, 28620, 28621, 28622**

DESCRIPTION: **HYDRAULIC LIFT**

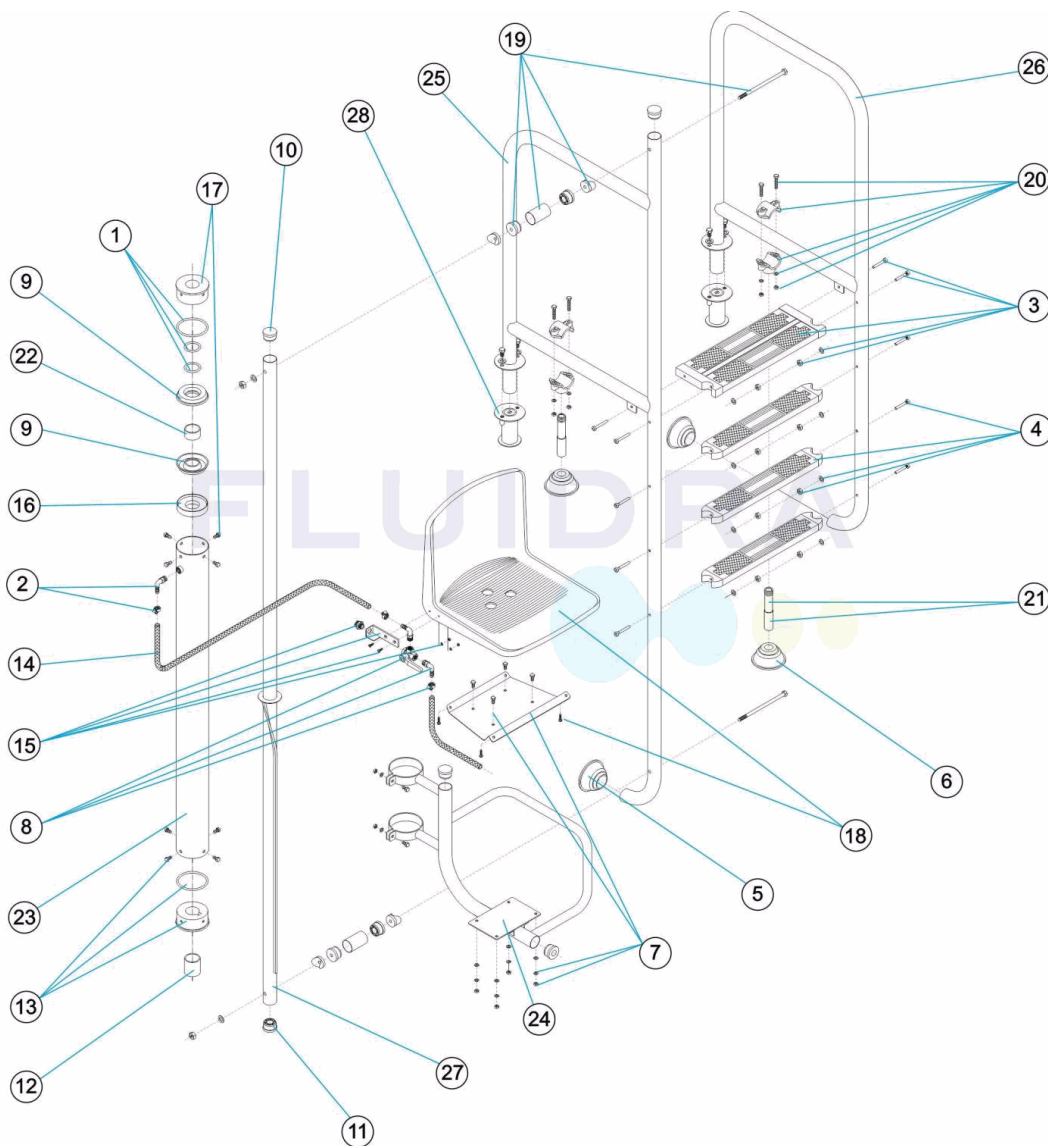
14	4401011514	PIPE 0,9 M.	26	* 15219R0200	SMALL HANDRAIL L=650
27	11277R0100	MECHANICAL TUBE	28	00143	ANCHOR

CODE **11277, 15219, 28619, 28620, 28621, 28622**DESCRIPTION: **HYDRAULIC LIFT****OBSERVATIONS**

POS	CODE	OBSERVATIONS
25	11277R0800	FOR: 11277, 28620
25	15219R0100	FOR: 15219, 28619
26	11277R0900	FOR: 11277, 28620
26	15219R0200	FOR: 15219, 28619

CODICE 11277, 15219, 28619, 28620, 28621, 28622

DESCRIZIONE: ELEVATORE IDRAULICO



ITALIANO

POS	CODICE	DESCRIZIONE	POS	CODICE	DESCRIZIONE
1	4401011501	GUARNIZIONI SOLLEVATORE	15	4401011515	SUPPORTO VALVOLA
2	4401011502	GOMITO E FLANGIA	16	4401011516	SUPPORTO GUARNIZIONE
3	4401011503	GRADINO SICUREZZA SOLLEVATORE	17	4401011517	TAPPO GUIDA SUPERIORE
4	4401011504	GRADINO LUSO SOLLEVATORE	18	4401011518	SEIDA
5	4401010501	PIEDINO SNODABILE	19	4401011519	KIT ATTACO SEIDA
6	4401011506	PIEDINO SNODABILE D 28	20	4401011520	PRESA A STAFFA SOSTEGNO
7	4401011507	PIASTRA SEGGIOLA	21	4401011521	TUBO SOSTENGO
8	4401011508	VALVOLA A 3 VIE COMPLETA	22	4401011505	PASSANTI
9	4401011509	GUARNIZIONE SOLLEVATORE	23	11277R0600	CILINDRO ELEVATORE
10	4401070208	PASSANTE CIECO	24	11277R0400	SOSTEGNO SEDILE
11	4401050402	PASSANTI	25	* 11277R0800	CORRIMANO LUNGO L=1000
12	4401011512	TAPPO DI SICUREZZA	25	* 15219R0100	CORRIMANO LUNGO L=650
13	4401011513	TAPPO CON GUIDA	26	* 11277R0900	CORRIMANO CORTO L=1000

* -> SI FACCIA RIFERIMENTO AL FOGLIO DELLE OSSERVAZIONI

CODICE **11277, 15219, 28619, 28620, 28621, 28622**

DESCRIZIONE: **ELEVATORE IDRAULICO**

14	4401011514	TUBO ENTRATA 0,9 M.	26	* 15219R0200	CORRIMANO CORTO L=650
27	11277R0100	KIT CILINDRO GUIDA	28	00143	ANCORAGGIO

CODICE 11277, 15219, 28619, 28620, 28621, 28622

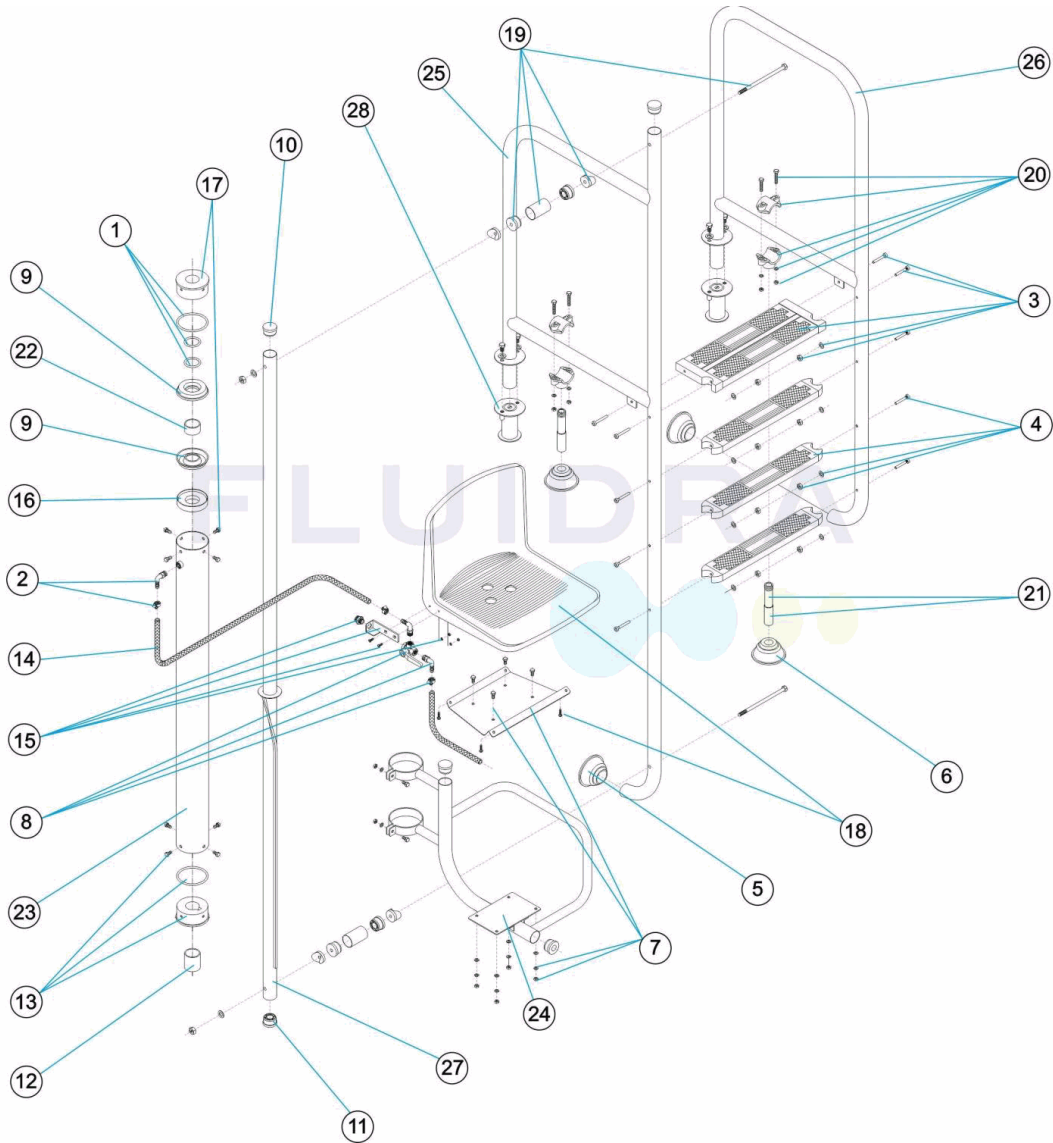
DESCRIZIONE: ELEVATORE IDRAULICO

OSSERVAZIONI

POS	CODICE	OSSERVAZIONI
25	11277R0800	PER: 11277, 28620
25	15219R0100	PER: 15219, 28619
26	11277R0900	PER: 11277, 28620
26	15219R0200	PER: 15219, 28619

CODE **11277, 15219, 28619, 28620, 28621, 28622**

BESCHREIBUNG: **HYDRAULISCHER AUFZUG**



DEUTSCH

POS	CODE	BESCHREIBUNG	POS	CODE	BESCHREIBUNG
1	4401011501	DICHTUNGEN LIFT	15	4401011515	VENTILBEFESTIGUNG
2	4401011502	WINKEL UND FLANSCH	16	4401011516	DICHTUNGSLAGER
3	4401011503	STUFE SICHERHEIT LIFT	17	4401011517	OBERER FÜHRUNGSDECKEL
4	4401011504	STUFE LUXE LIFT	18	4401011518	SITZ
5	4401010501	GELENKFUSS HOCHBECKENLEITER	19	4401011519	VERBINDUNGSKIT
6	4401011506	GELENKFUSS HOCHBECKENLEITER D 28	20	4401011520	STÜTZUNGSSCHELLE
7	4401011507	SITZBEFESTIGUNG RETTUNGSSCHWIMMERSITZ	21	4401011521	STÜTZROHR
8	4401011508	3-WEGE VENTIL KOMPLETT	22	4401011505	LAGERBUCHSEN
9	4401011509	DICHTUNG LIFT	23	11277R0600	ZYLINDER LIFT
10	4401070208	ABDECKKAPPEN	24	11277R0400	SITZHALTERUNG
11	4401050402	LAGERBUCHSEN	25	* 11277R0800	HALTEGRIF L=1000
12	4401011512	SICHERHEITSHÜLSE	25	* 15219R0100	HALTEGRIF L=650
13	4401011513	FÜHRUNGSHÜLSE	26	* 11277R0900	HALTEGRIF KURZ L=1000

*** -> SIEHE ANMERKUNGSBLATT**

CODE **11277, 15219, 28619, 28620, 28621, 28622**

BESCHREIBUNG: **HYDRAULISCHER AUFZUG**

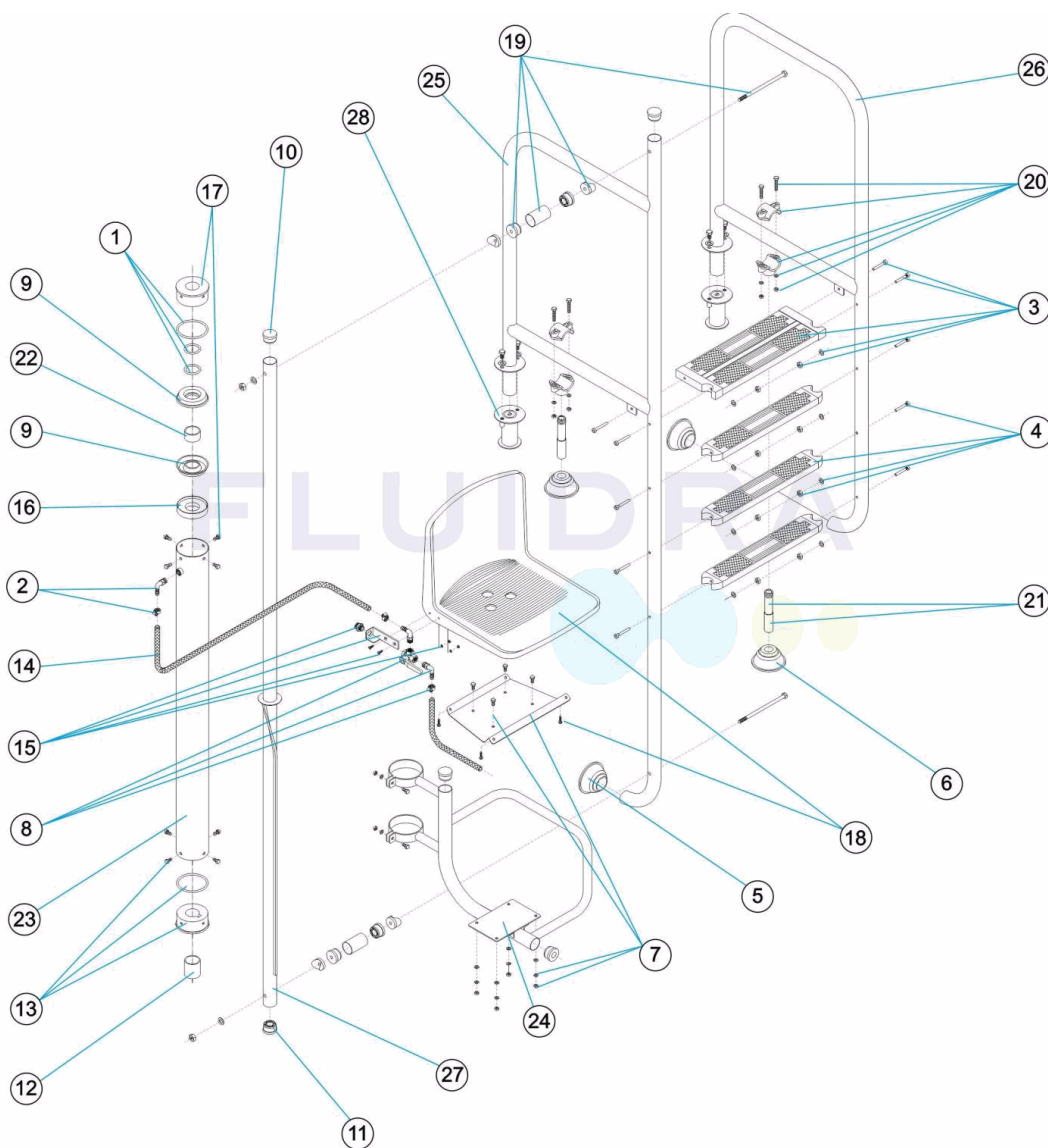
14	4401011514	EINLASSROHR	26	* 15219R0200	HALTEGRIFF KURZ L=650
27	11277R0100	EINHEIT FÜHRUNGSRHOR	28	00143	VERANKERUNG

CODE **11277, 15219, 28619, 28620, 28621, 28622**

BESCHREIBUNG: **HYDRAULISCHER AUFZUG**

HINWEISE

POS	CODE	HINWEISE
25	11277R0800	FÜR: 11277, 28620
25	15219R0100	FÜR: 15219, 28619
26	11277R0900	FÜR: 11277, 28620
26	15219R0200	FÜR: 15219, 28619

CODIGO 11277, 15219, 28619, 28620, 28621, 28622
DESCRIÇÃO: ELEVADOR HIDRÁULICO

PORTUGUES

POS	CODIGO	DESCRIÇÃO	POS	CODIGO	DESCRIÇÃO
1	4401011501	JUNTAS ELEVADOR	15	4401011515	SUPORTE VÁLVULA
2	4401011502	COTOBELO E FLANGE	16	4401011516	APOIO JUNTA
3	4401011503	DEGRAU SEGURANÇA ELEVADOR	17	4401011517	TAMPA GUIA SUPERIOR
4	4401011504	DEGRAU LUXE ELEVADOR	18	4401011518	CADEIRA
5	4401010501	BATENTE ARTICULADA	19	4401011519	CONJUNTO UNIÃO LIGAÇÃO
6	4401011506	BATENTE ARTICULADA D 28	20	4401011520	ABRÇADEIRA DE APOIO
7	4401011507	PLACA ASSENTO	21	4401011521	TUBO DE APOIO
8	4401011508	VALVULA 3 VIAS COMPLETA	22	4401011505	CASQUILHOS
9	4401011509	JUNTA ELEVADOR	23	11277R0600	CILINDRO ELEVADOR
10	4401070208	CASQUILHO TAPADO	24	11277R0400	SUPORTE ASSENTO
11	4401050402	CONJ. CASQUILHOS	25	* 11277R0800	CORRIMÃO COMPRIDO L=1000
12	4401011512	CASQUILHO DE SEGURANÇA	25	* 15219R0100	CORRIMÃO COMPRIDO L=650
13	4401011513	CASQUILHO GUIA	26	* 11277R0900	CORRIMÃO CURTO L=1000

*** -> VEJA A FICHA DE OBSERVAÇÕES**

CODIGO 11277, 15219, 28619, 28620, 28621, 28622

DESCRIÇÃO: ELEVADOR HIDRÁULICO

14	4401011514	TUBO ENTRADA 0,9 M.	26	* 15219R0200	CORRIMÃO CURTO L=650
27	11277R0100	CONJUNTO TUBO GUÍA	28	00143	ANCORA

CODIGO **11277, 15219, 28619, 28620, 28621, 28622**DESCRIÇÃO: **ELEVADOR HIDRÁULICO****OBSERVAÇÕES**

POS	CODIGO	OBSERVAÇÕES
25	11277R0800	PARA: 11277, 28620
25	15219R0100	PARA: 15219, 28619
26	11277R0900	PARA: 11277, 28620
26	15219R0200	PARA: 15219, 28619