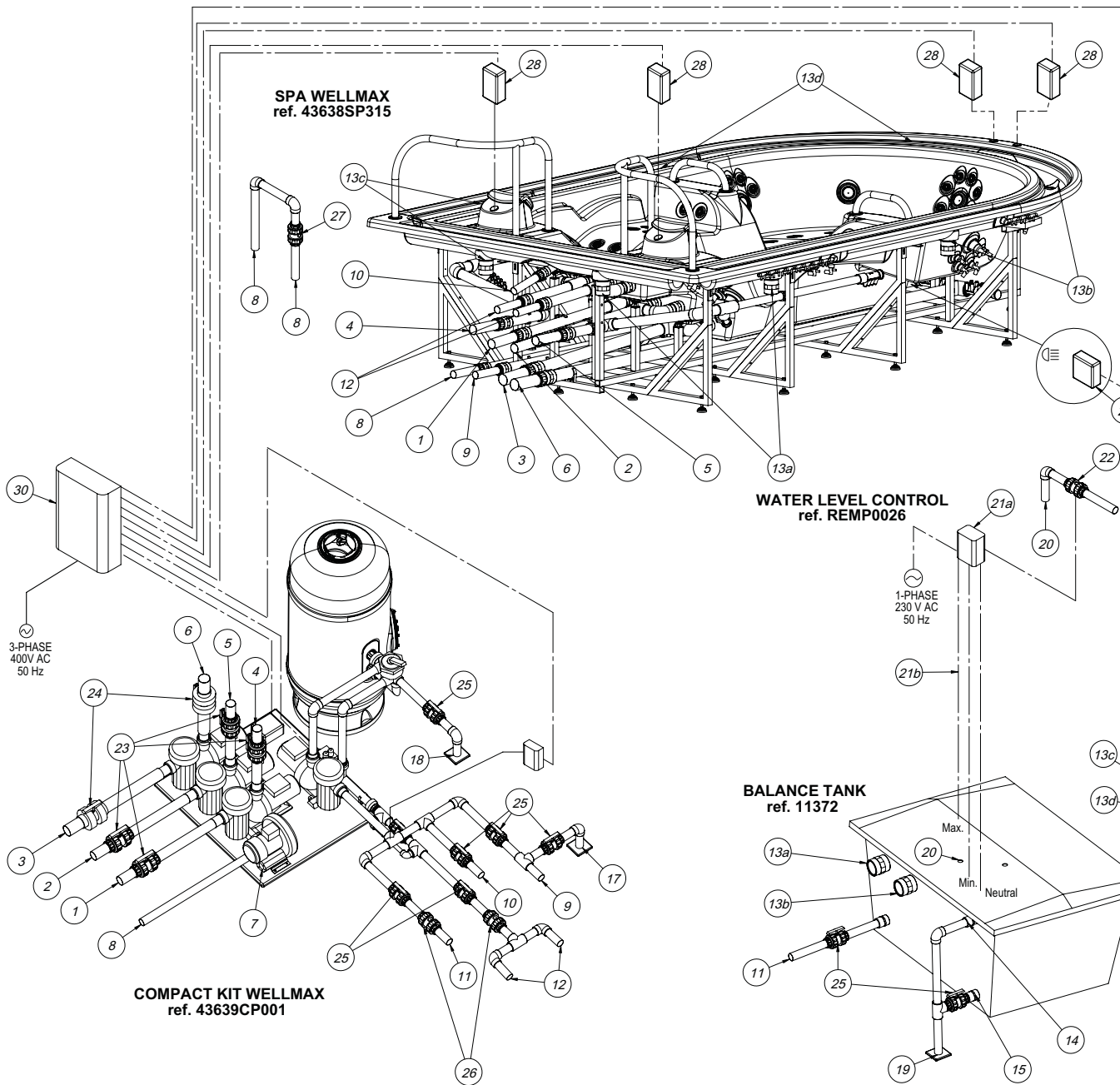


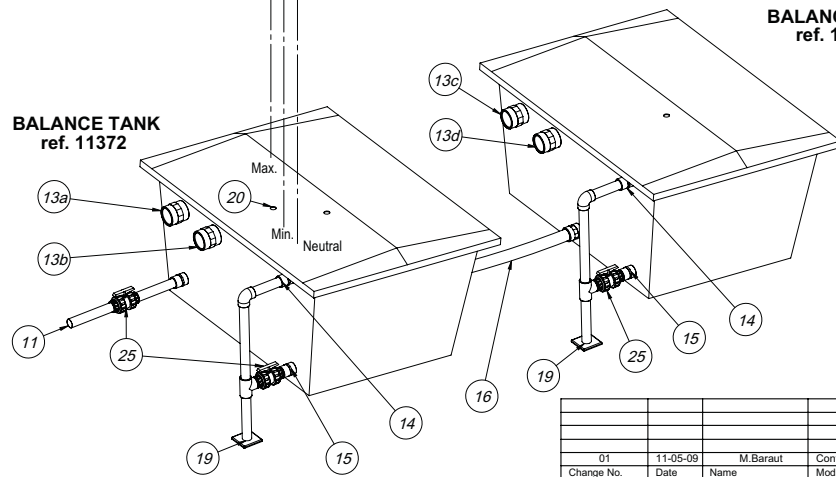
INSTALLATION DRAWING: SPA WELLMAX - KIT WELLMAX - BALANCE TANK - WATER LEVEL CONTROL



Bill of Material / Version

Pos.	Item	Part Number	Material / Model	Significant Characteristics
1	Suction-Water Massage Pump 1 (2CV)		PVC	Ø63 mm pipeline not included
2	Suction-Water Massage Pump 2 (2CV)		PVC	Ø63 mm pipeline not included
3	Suction-Water Massage Pump 1 (3CV)		PVC	Ø75 mm pipeline not included
4	Return-Water Massage Pump 1 (2CV)		PVC	Ø63 mm pipeline not included
5	Return-Water Massage Pump 2 (2CV)		PVC	Ø63 mm pipeline not included
6	Return-Water Massage Pump 1 (3CV)		PVC	Ø75 mm pipeline not included
7	Suction-Air Blower		PVC	Ø50 mm pipeline not included
8	Return-Air Blower		PVC	Ø50 mm pipeline not included
9	Suction-Filtration Pump Bottom Spa		PVC	Ø50 mm pipeline not included
10	Suction-Filtration Vacuum Cleaner		PVC	Ø50 mm pipeline not included
11	Suction-Filtration Compensation Tank		PVC	Ø50 mm pipeline not included
12	Return-Filtration Pump		PVC	Ø50 mm pipeline not included
13a	Water inlet 1-Balance Tank 1		Ø90 mm tank - Ø75 mm Spa	Ø90 / 75 mm tank holes not done
13b	Water inlet 2-Balance Tank 1		Ø90 mm tank - Ø75 mm Spa	Ø90 / 75 mm tank holes not done
13c	Water inlet 1-Balance Tank 2		Ø90 mm tank - Ø75 mm Spa	Ø90 / 75 mm tank holes not done
13d	Water inlet 2-Balance Tank 2		Ø90 mm tank - Ø75 mm Spa	Ø90 / 75 mm tank holes not done
14	Overflow-Balance Tank		Ø50 mm	holes not done
15	Drain-Balance Tank		Ø50 mm	holes not done
16	Connection Pipe between Tanks		Ø63 mm	holes not done
17	External Drain-Spa		Ø50 mm	
18	External Drain-Filter		Ø50 mm	
19	External Drain-Balance Tank		Ø50 mm	
20	External Water Inlet		Ø50 mm	
21	Water level control	REMP0026		200 x 160 x 110 mm
21a	Electrical Box-Balance Tank		230V AC 1-phase 50Hz	included in ref. REMP0026
21b	Vertical Level Sensor		Max / Min / Neutral	included in ref. REMP0026
22	Filling Solenoid Valve		230V AC / NC / Ø1.5"	not included
23	Ball Valve Ø63	02503	PVC-U Body Ø63mm PN10	included in Compact Kit (43639) 4
24	Ball Valve Ø75	36507	PVC-U Body Ø75mm PN10	included in Compact Kit (43639) 2
25	Ball valve Ø50	02502	PVC-U Body Ø50mm PN10	6 un included in Compact Kit (43639) 9
26	Spring Check Valve Ø50 Water	09015	PVC-U Body Ø50mm	included in Compact Kit (43639) 2
27	Spring Check Valve Ø1.5" Air	600-8140	PVC Ø1.5" x Ø1.5"S	included in Compact Kit (43639) 1
28	Push-Button Box	33387	input 230V AC / output 12V	included in Spa Wellmax (43638) 4
29	Light feeder	32640	230V - 1 ph - 50 / 60 Hz	included in Spa Wellmax (43638) x
30	Electrical Control Box	43639-0100	400V AC 3-phase 50Hz	included in Compact Kit (43639) x

BALANCE TANK ref. 11372



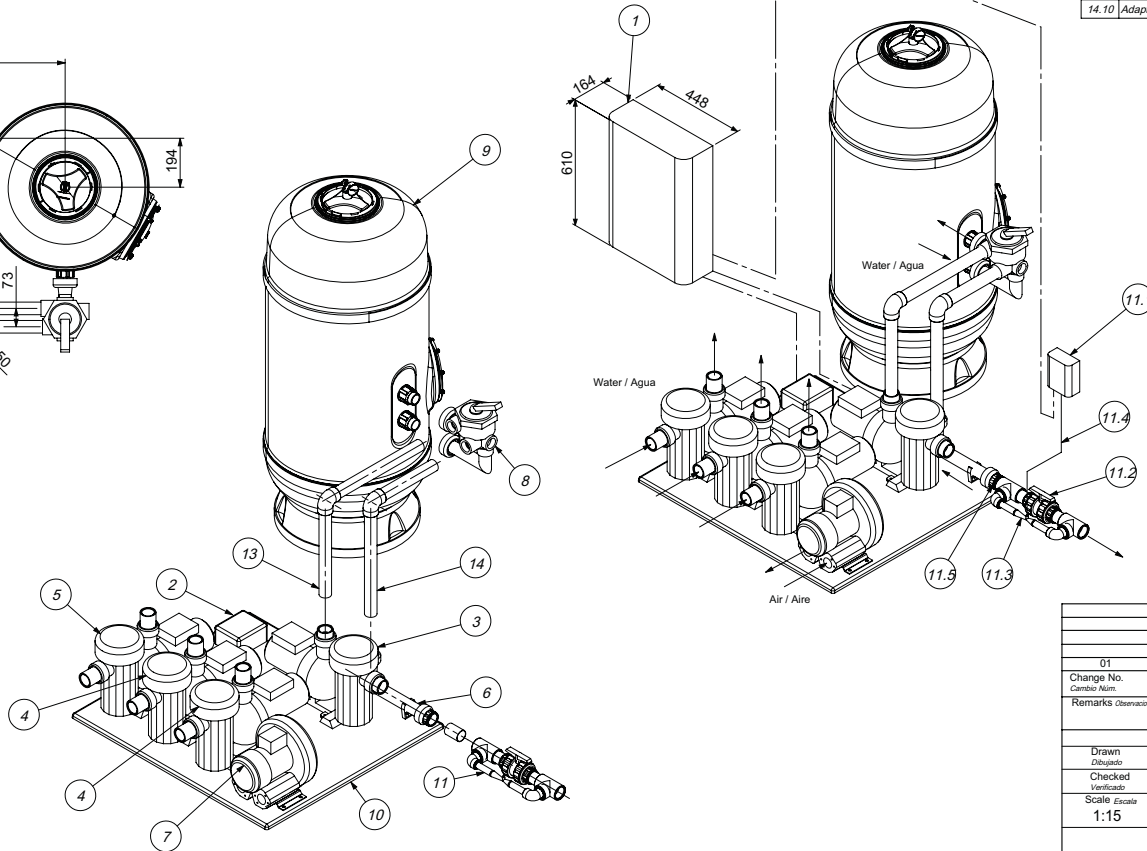
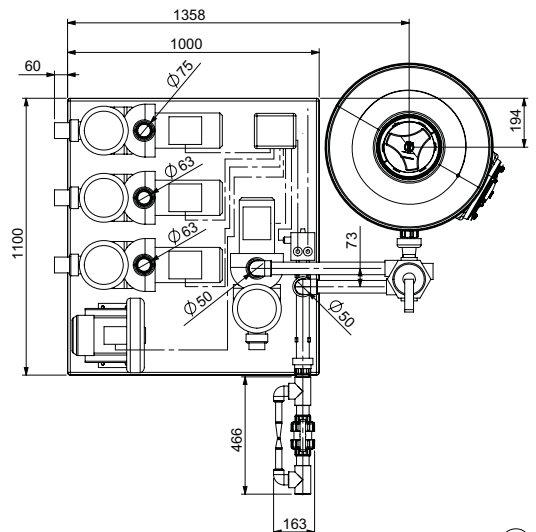
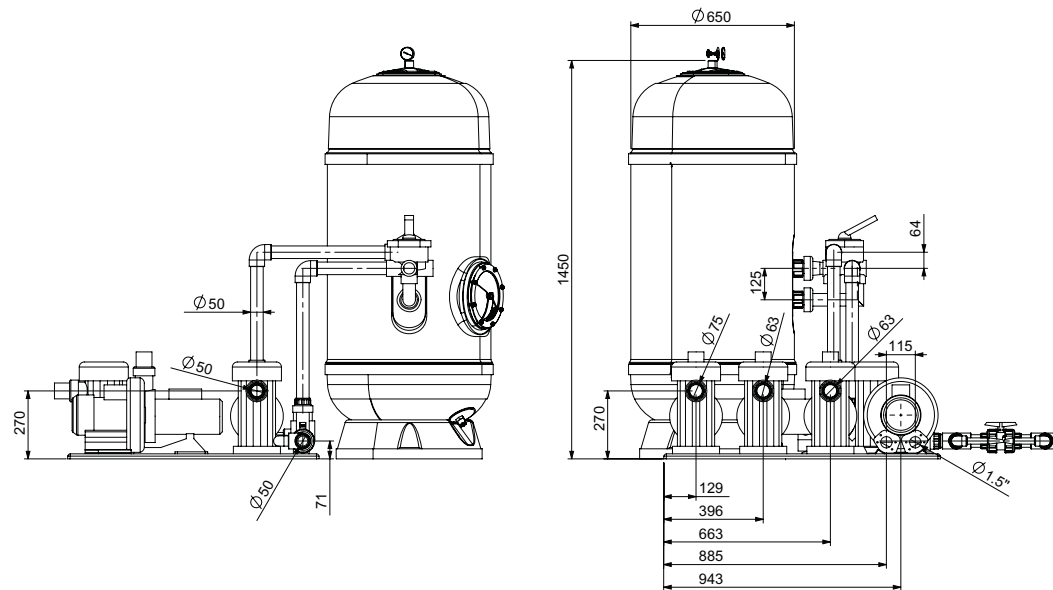
Dimensions in mm.

Cotas en mm.

Control Dimensions  
Cotas de control

CC/SC Critical or Significant Characteristics  
CC/SC Características Críticas o Significativas

Change No.	Date	Name	Modification
01	11-05-09	M.Baraut	Control of dimensions after 1st prototype / Verificación después de prototipo.
Change No.	Date	Name	Modification
Combin. Num.	Fecha	Nombre	Modificación
Remarks Observaciones			
Drawn	Date	Name	Part Number
Dibujado	Fecha	Nombre	Número
Checked	Date	Name	Part Number
Verificado	Fecha	Nombre	Número
Scale	General Tolerance	Material	Surface Coating
Escala	Tolerancias Generales	Materiales	Acabado Superficial
1:20	DIN 7168 ISO 2768g		
	Article number	Drawing type	Weight
	Num. Artículo	Installation	(g)
			Surface Hardness
			Shore A
			First Angle Projection
			Color RAL

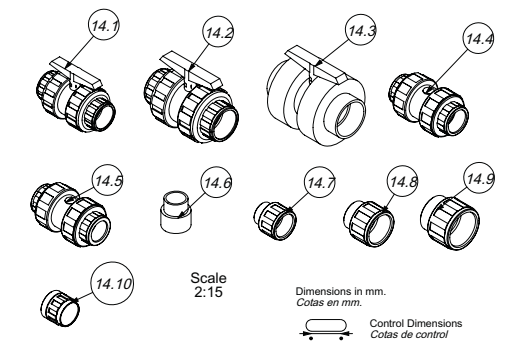


Bill of Material / Version

Pos.	Item	Part Number	Material / Model	Significant Characteristics		
1	Electrical Control Box	43639-0100	610 x 448 x 164 mm	400V AC 3-phase 50Hz	X	X
2	Connection Box		PVC / 020501010	165 x 140 x 85mm	X	X
3	Filtration Pump	38772	IP55 / Large cap. stainer basket	400V 3-ph / 0.75cv / 11m3/h (10 m)	X	X
4	Massage Pump 2CV	38778	IP55 / Large cap. stainer basket	400V 3-ph / 2cv / 26 m3/h (10 m)	2	2
5	Massage Pump 3CV	38780	IP55 / Large cap. stainer basket	400V 3-ph / 3cv / 34 m3/h (10 m)	X	X
6	Heater 6kW	08082-0098	AISI-316 / Incoloy Resistors	400V 3-ph / 6kW / Ø50mm / 50-60 Hz	X	X
6.1	Flow Safety Sensor		Security against water lack	included in 08082-0098	X	X
6.2	Temperature Safety Sensor		Temp. activation 65°C	included in 08082-0098	X	X
6.3	Temperature Cntrl Sensor	08663-0004	PTC (N)	included in 08082-0098	X	X
7	Blower 1.3kW	16412-0602	Single Stage Side Ch. / IP54	400V 3-ph / 1.3 kW / 100m3/h (60mbar)	X	X
8	Filter Valve	00599	Injection-moulded ABS	Ø1.5" slip / Pmax 3.5 kg/cm2	X	X
9	Filter Ø650 mm.	00495-0000	Fiberglass + Resin / 36676	Øfit 650mm / Øcon 1.5" / pmax 2.5bar	X	X
10	Base	05135-0001	Fiberglass + Resin + Gel-coat	1000 x 1100 x 20 mm	X	X
11	Ozone for Compact Kit	19728			X	
11.1	Ozone Generator	19729-0002	included in 19728	220-240V / 90 mA / 22W / 50-60Hz	X	
11.2	Ball Valve Ø50	02502	PVC-U Body / HDPE Joints	Ø50 PN10 / 31 x 162 x 94 mm	X	
11.3	Ozone Venturi Injector	34394-0003	Polyvinilidene Fluoride (PVDF)		X	
11.4	Ozone check Valve			included in 19729-0002	X	
11.5	Heater-Ozone Pipe		PVC Ø50mm	not included	X	
12	Pump-Filter Pipe		PVC / includes 90° elbow PN16	Ø50mm	X	X
13	Filter-Heater Pipe		PVC / includes 90° elbow PN16	Ø50mm	X	X
14	Fitting Kit				X	X
14.1	Ball Valve Ø50	02502	PVC-U Body / HDPE Joints	Ø50 PN10 / 31 x 162 x 94 mm	6	6
14.2	Ball Valve Ø63	02503	PVC-U Body / HDPE Joints	Ø63 PN10 / 38 x 192 x 117 mm	4	4
14.3	Ball Valve Ø75	36507	PVC-U Body / HDPE Joints	Ø75 PN10 / 44 x 216 x 146 mm	2	2
14.4	Spring Check Valve Ø50	09015	PVC-U Body / HDPE Joints	Ø50 water	2	2
14.5	Spring Check Valve Ø1.5"	600-8140	PVC	Ø1.5" S x Ø1.5" S Air	1	1
14.6	Metric Adaptor Ø50 - Ø1.5"	417-6137	PVC	Ø50 mm S - Ø1.5" Spg	2	2
14.7	Adaptor Bush Ø50 - Ø1.5"	02106	PVC-U / Fem.SxBSPmale thr.	Ø50 - Ø1.5" PN16	4	4
14.8	Adaptor Bush Ø63 - Ø2"	02107	PVC-U / Fem.SxBSPmale thr.	Ø63 - Ø2" PN16	4	4
14.9	Adaptor Bush Ø75 - Ø2.5"	02108	PVC-U / Fem.SxBSPmale thr.	Ø75 - Ø2.5" PN16	2	2
14.10	Adaptor nipple	02100	PVC-U / Fem.SxBSPmale thr.	Ø50 - Ø2" PN16	3	3

Ozone		X
-------	--	---

Specifications			
Dimensions (mm)	Kit: 1100x1052x425mm	Filter: 945x710x1583mm	Control Box: 448x164x100mm
Weight (kg)	Kit: 115 kg	Filter: 55kg	Control Box: 5kg
Package Size (mm)	Kit: 1200x1200x1000mm	Filter: 1020x1020x1950mm	Control Box: 5kg
Package Weight (kg)	Kit: 150 kg	Filter: 65kg	



Change No.	Date	Name	Part Name	Part Number	Rev No.		
01	11-05-09	M.Baraut	Control of dimensions after 1st prototype / Verificación después de prototipo.				
Drawn	20-01-09	M.Baraut	Compact Kit Wellmax	43639CP000	01		
Checked	20-01-09	I.Nicolas		43639CP001			
Scale	General Tolerance Tolerancias Generales DIN 7168 ISO 2768g		Material	Surface Coating Acabado Superficial	Color RAL		
			Article number Num. Artículo 43639CP000 43639CP001	Drawing type Tipo de plano Product	Weight Peso (g)	Surface Hardness Shore A	First Angle Projection

Don't use without permission. Keep this information confidential and use it solely for the permitted purpose.